

GENERAL INFORMATION

SPECIFICATIONS

5A. SUBMERSIBLE FOUNTAIN PUMPS

PUMP SERIES:

SFU (0.3HP - 1HP, 3450RPM)

SF (0.4HP, 1750RPM)

SF (0.5HP, 1750RPM)

3SF-L (1.0HP, 1750RPM)

3SF-L (3.0HP - 1750RPM)

3SF-HD (1.5 & 2HP - 1750RPM)

This page intentionally left blank

Submersible Fountain Pumps

DISCHARGE 1¾" (45mm) Hose Connection, 90° Rotation

LIQUID TEMPERATURE 145°F (63°C) Continuous

VOLUTE Brass ASTM A4, 85-5-5-5

INTERMEDIATE Brass ASTM A4, 85-5-5-5

HOUSING TUBE Brass, 260 Soft

HOUSING END PIECE Brass ASTM A4, 85-5-5-5

SCREEN: *Design* Area, 264 sq. in. wrap around, 5/32" Dia. mesh

Material 304 Stainless Steel

PUMP SUPPORTS Brass

DIAPHRAGM Buna-N, Pressure Equalized

IMPELLER:

Design: 1/3 & 1/2HP..... Four Vane Open

 3/4 & 1HP..... Six Vane Open

Material Brass ASTM A4, 85-5-5-5

SHAFT 416 Stainless Steel

O-RINGS Buna-N

HARDWARE 300 Series Stainless Steel

SEAL Single Mechanical, Carbon/Ceramic/Buna-N

CABLE ENTRY 12 ft. (4m) Cord. Pressure grommet for sealing and strain relief

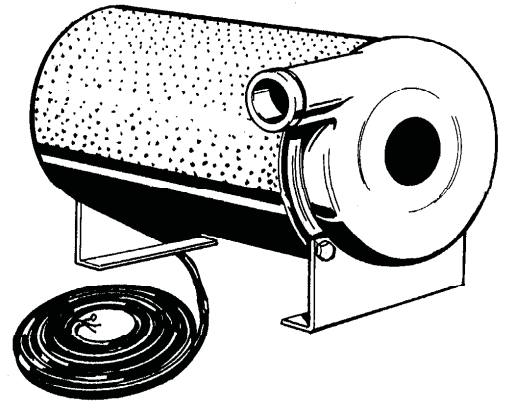
MOTOR END BEARING Single Row, Ball, Oil Lubricated

PUMP END BEARING Sleeve, Oil Lubricated

MOTOR: *Design* NEMA L, Oil Filled, Squirrel Cage Induction

Insulation Class A

SINGLE PHASE..... Permanent Split Capacitor (PSC) Includes Overload Protection in Motor



Series: SFU
1/3 - 1HP, 3450RPM, 60Hz

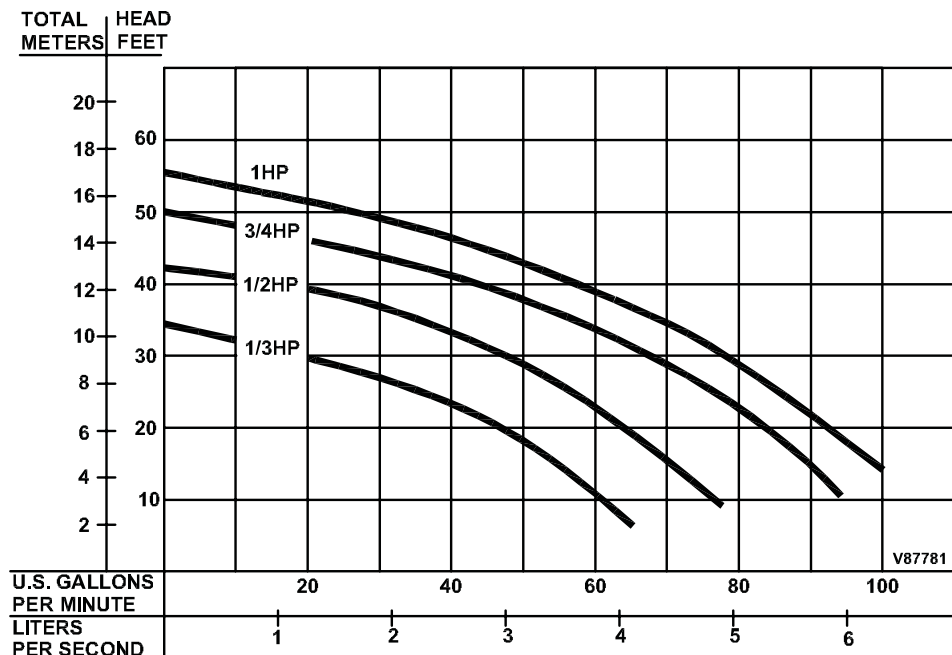


Underwriters Laboratories Inc.
File No. E142177



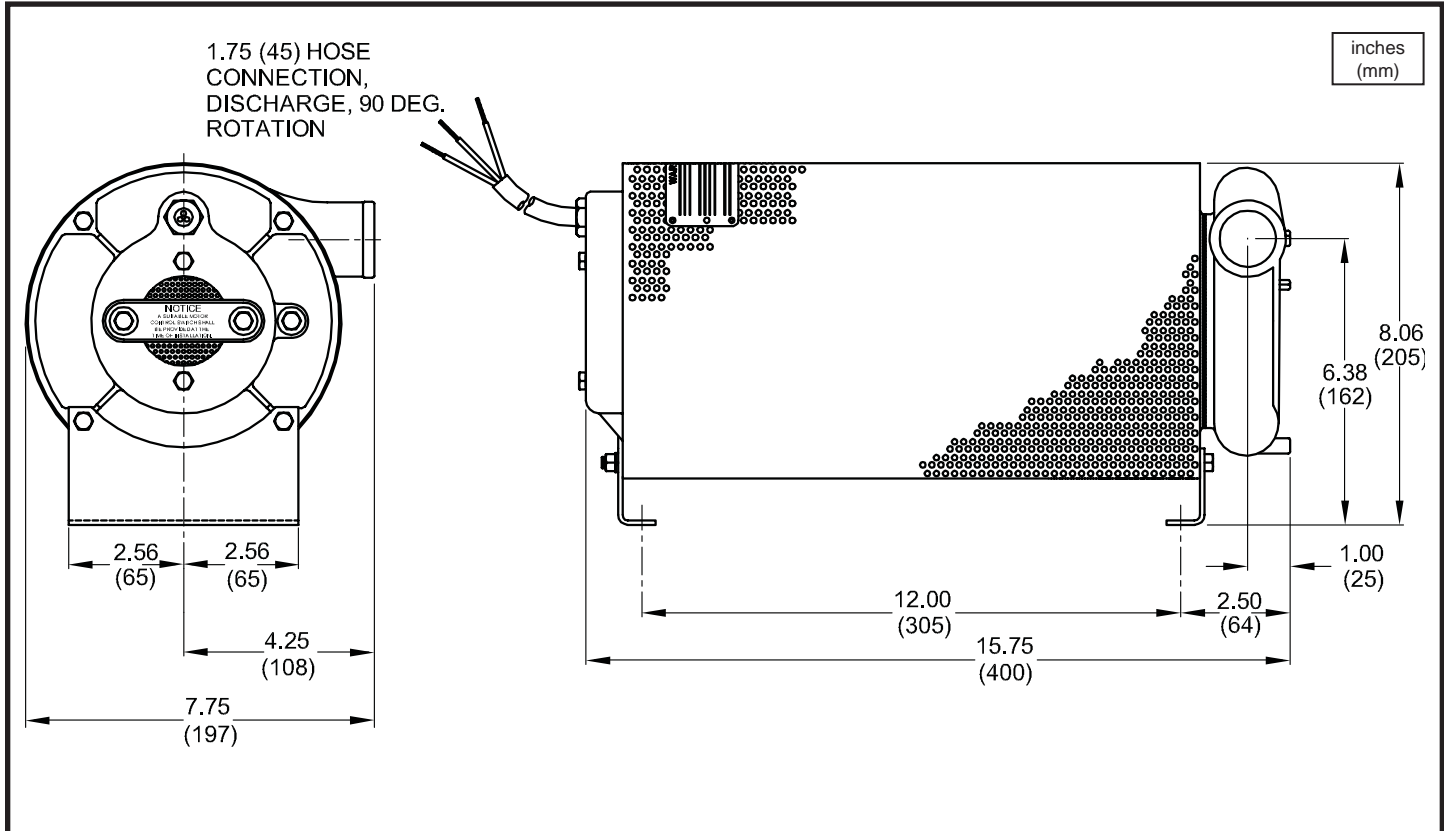
DESCRIPTION:

THESE PUMP ARE SPECIALLY DESIGNED FOR USE IN DRAMATIC, DECORATIVE WATER DISPLAYS



Testing is performed with water specific gravity of 1.0 @ 68°F (20°C), other fluids may vary performance

Submersible Fountain Pumps



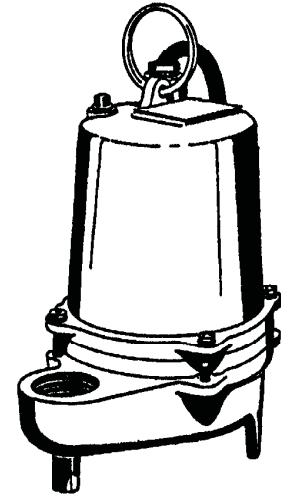
MODEL NO	PART NO	HP	VOLT/PH	Hz	RPM (Nom)	NEMA START CODE	FULL LOAD AMPS	LOCKED ROTOR AMPS	CORD SIZE	CORD TYPE	CORD O.D inch (mm)
SFU31	087781	1/3	115/1	60	3450	J	8.0	21.0	16/3	SOW	0.395 (10)
SFU51	087782	1/2	115/1	60	3450	E	9.5	21.0	16/3	SOW	0.395 (10)
SFU71	087783	3/4	115/1	60	3450	D	12.0	28.0	16/3	SOW	0.395 (10)
SFU102	087785	1	230/1	60	3450	E	7.0	21.0	16/3	SOW	0.395 (10)

IMPORTANT !

- 1.) THESE PUMPS ARE UL LISTED FOR PUMPING WATER. **DO NOT USE TO PUMP FLAMMABLE LIQUIDS.**
- 2.) SPECIAL SUCTION CHAMBER KEEPS MOTOR 2/3 SUBMERGED AT ALL TIMES FOR COOL OPERATION.
- 3.) MODIFICATIONS MAY AFFECT "UL" LISTING.
- 4.) INSTALLATIONS SUCH AS DECORATIVE FOUNTAINS OR WATER FEATURES PROVIDED FOR VISUAL ENJOYMENT MUST BE INSTALLED IN ACCORDANCE WITH THE NATIONAL ELECTRIC CODE ANSI/NFPA 70 AND/OR THE AUTHORITY HAVING JURISDICTION. THIS PUMP IS NOT INTENDED FOR USE IN SWIMMING POOLS, RECREATIONAL WATER PARKS, OR INSTALLATIONS IN WHICH HUMAN CONTACT WITH PUMPED MEDIA IS A COMMON OCCURRENCE.

Submersible Fountain Pumps

DISCHARGE	2" NPT, Female, Vertical
LIQUID TEMPERATURE	77°F (25°C) Continuous
VOLUTE	Cast Iron ASTM A-48, Class 30
MOTOR HOUSING	Cast Iron ASTM A-48, Class 30
SEAL PLATE	Cast Iron ASTM A-48, Class 30
IMPELLER: Design	2 Vane open, with pump out vanes on back side. Dynamically balanced, ISO G6.3
<i>Material:</i>	Cast Iron ASTM A-48, Class 30
SHAFT	416 Stainless Steel
SQUARE RINGS	Buna-N
HARDWARE	300 Series Stainless Steel
PAINT	Air Dry Enamel
SEAL: Design	Single Mechanical, Oil Filled reservoir Secondary Exclusion Seal
<i>Material</i>	Carbon/Ceramic/Buna-N Hardware -300 Series Stainless
CORD ENTRY	15 ft. (5m) Quick Disconnect Cord with plug On 115 Volt, Pressure Grommet for sealing and strain relief
UPPER BEARING	Single Row, Ball, Oil Lubricated
LOWER BEARING	Single Row, Ball, Oil Lubricated
MOTOR: Design	NEMA L Torque curve, Oil Filled, Squirrel cage Induction
<i>Insulation</i>	Class B
SINGLE PHASE	Permanent Split Capacitor (PSC). Includes thermal overload protection in motor
OPTIONAL EQUIPMENT	Seal Material, Additional cord and Cast Iron Impeller

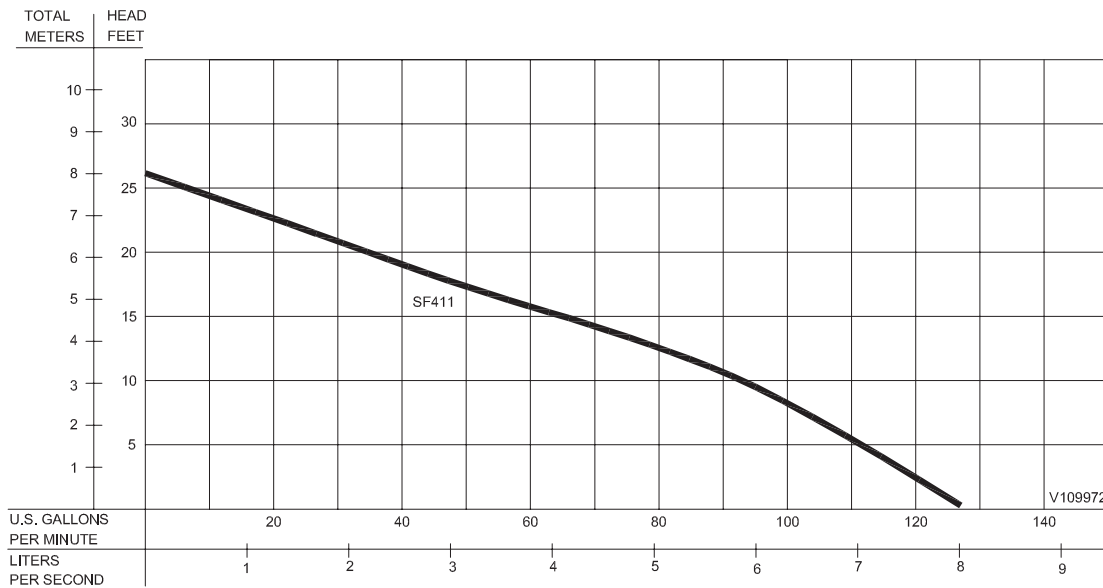


Series: SF
.4HP, 1750RPM, 60Hz



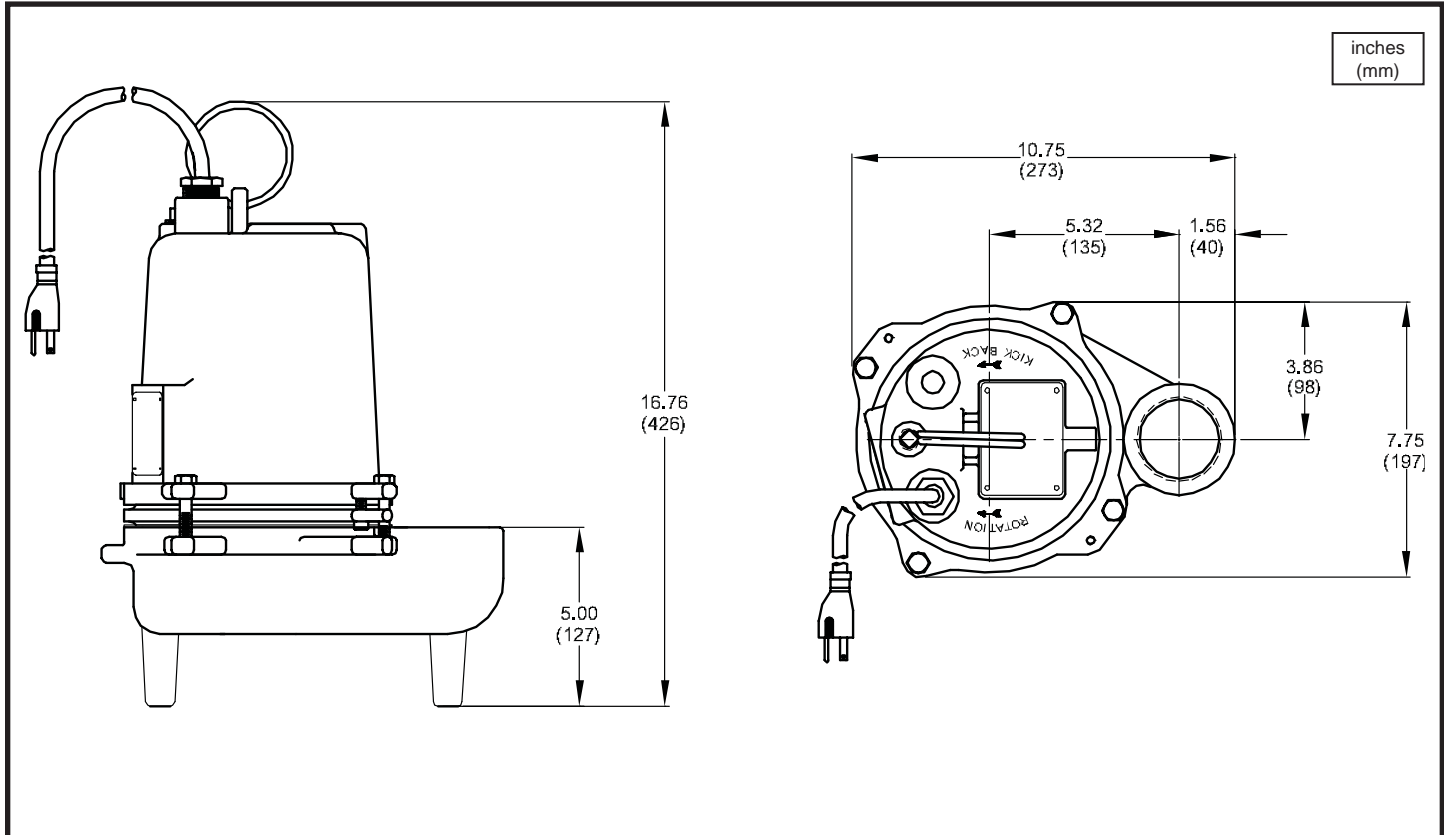
DESCRIPTION:

THESE PUMP ARE SPECIALLY DESIGNED FOR USE IN
DRAMATIC, DECORATIVE WATER DISPLAYS



Testing is performed with water specific gravity of 1.0 @ 68°F (20°C), other fluids may vary performance

Submersible Fountain Pumps



MODEL NO	PART NO	HP	VOLT/PH	Hz	RPM (Nom)	NEMA START CODE	FULL LOAD AMPS	LOCKED ROTOR AMPS	CORD SIZE	CORD TYPE	CORD O.D inch (mm)
SF411	109972	0.4	115/1	60	1750	C	12.0	19.0	14/3	SJTOW	0.375 (9.5)

IMPORTANT !

- 1.) **DO NOT USE TO PUMP FLAMMABLE LIQUIDS.**
- 2.) INSTALLATIONS SUCH AS DECORATIVE FOUNTAINS OR WATER FEATURES PROVIDED FOR VISUAL ENJOYMENT MUST BE INSTALLED IN ACCORDANCE WITH THE NATIONAL ELECTRIC CODE ANSI/NFPA 70 AND/OR THE AUTHORITY HAVING JURISDICTION. THIS PUMP IS NOT INTENDED FOR USE IN SWIMMING POOLS, RECREATIONAL WATER PARKS, OR INSTALLATIONS IN WHICH HUMAN CONTACT WITH PUMPED MEDIA IS A COMMON OCCURRENCE.

Submersible Fountain Pumps

DISCHARGE:

SF Series2" NPT, Female, Vertical, Bolt-on Flange
 3SF Series.....3" NPT, Female, Vertical, Bolt-on Flange

LIQUID TEMPERATURE 104°F (40°C) Continuous

VOLUTE Cast Iron ASTM A-48, Class 30

MOTOR HOUSING Cast Iron ASTM A-48, Class 30

SEAL PLATE Cast Iron ASTM A-48, Class 30

IMPELLER: Design 2 Vane open, with pump out vanes on back side. Dynamically balanced, ISO G6.3

Material Cast Iron ASTM A-48, Class 30

SHAFT 416 Stainless Steel

SQUARE RINGS..... Buna-N

HARDWARE 300 Series Stainless Steel

PAINT Air Dry Enamel

SEAL: Design Single Mechanical

Material Silicon/Silicon/Buna-N
 Hardware -300 Series Stainless

CORD ENTRY 15 ft. (5m) Cord with plug on 120 Volt Quick Connect, Custom Molded for sealing and strain relief

UPPER BEARING..... Single Row, Ball, Oil Lubricated

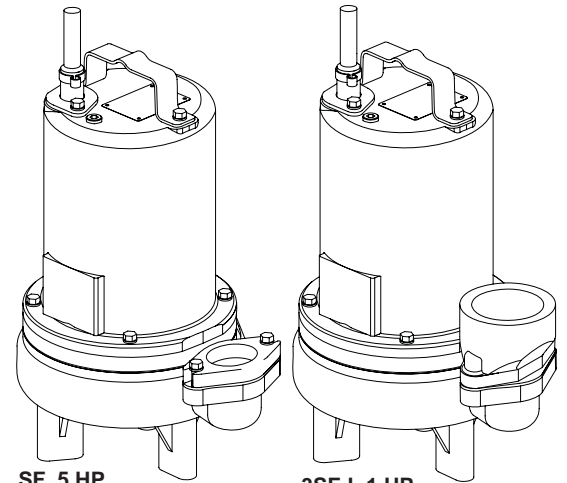
LOWER BEARING..... Single Row, Ball, Oil Lubricated

MOTOR: Design NEMA L Torque curve, Oil Filled, Squirrel cage Induction

Insulation..... Class B

SINGLE PHASE..... Permanent Split Capacitor (PSC). Includes thermal overload protection in motor

OPTIONAL EQUIPMENT..... Seal Material, Additional cord and Impeller trims



SF .5 HP

3SF-L 1 HP

Series:

SF - .5HP, 1750RPM, 60Hz

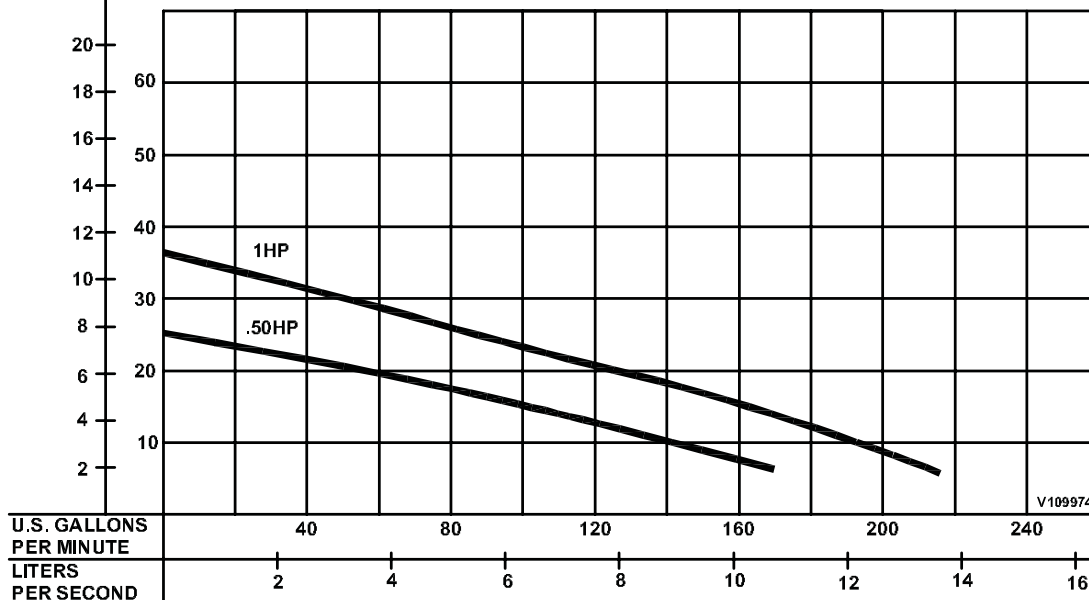
3SF-L - 1HP, 1750RPM, 60Hz



DESCRIPTION:

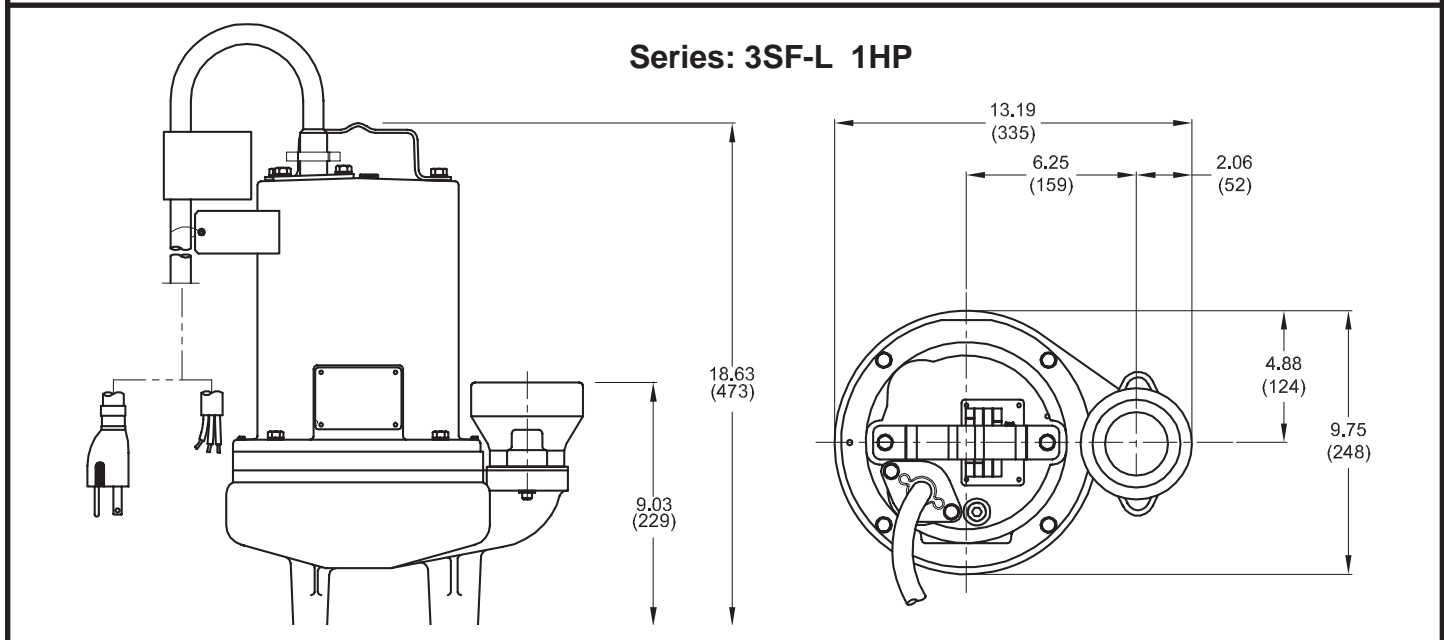
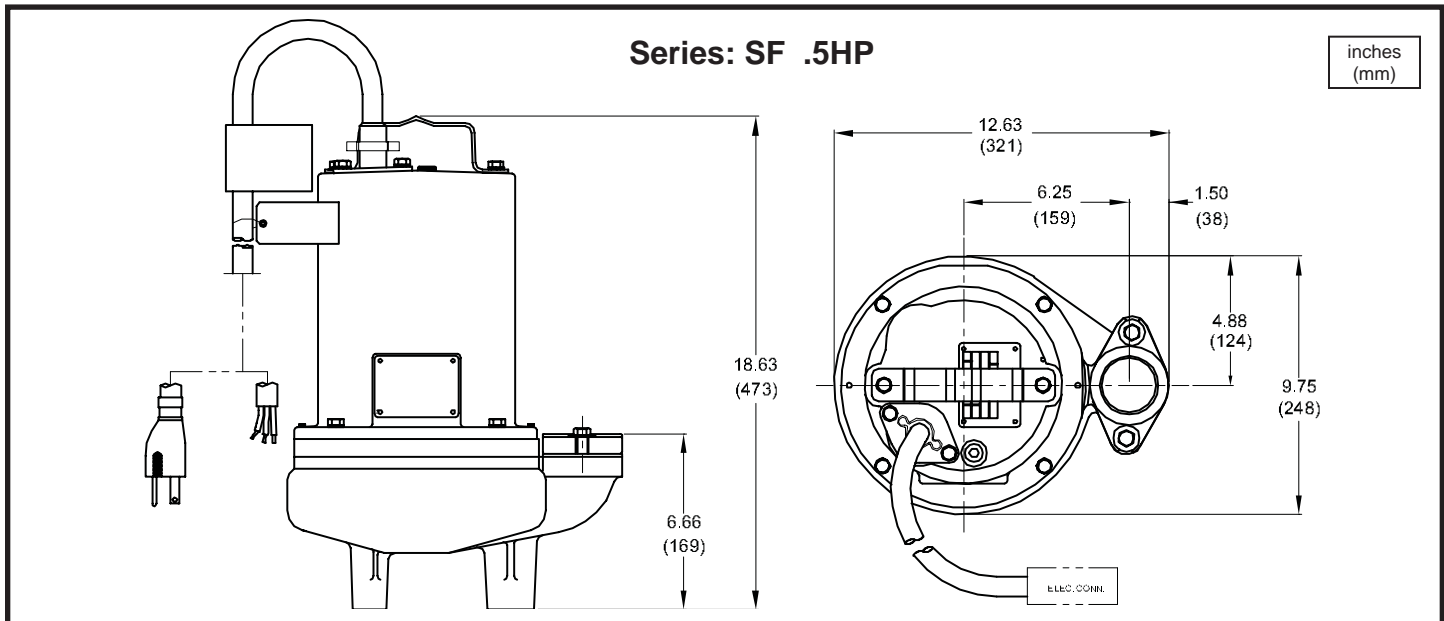
THESE PUMP ARE SPECIALLY DESIGNED FOR USE IN DRAMATIC, DECORATIVE WATER DISPLAYS

TOTAL HEAD METERS | **HEAD FEET**



Testing is performed with water specific gravity of 1.0 @ 68°F (20°C), other fluids may vary performance

Submersible Fountain Pumps



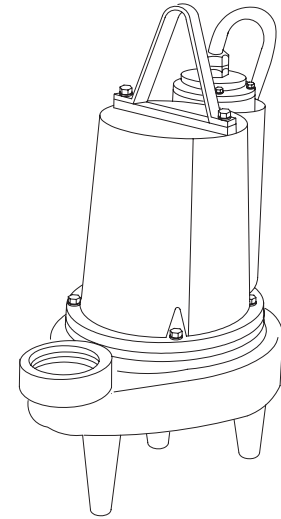
MODEL NO	PART NO	HP	VOLT/PH	Hz	RPM (Nom)	NEMA START CODE	FULL LOAD AMPS	LOCKED ROTOR AMPS	CORD SIZE	CORD TYPE	CORD O.D. inch (mm)
SF51	109974	0.5	120/1	60	1750	F	11.6	21.3	14/3	SJTOW	0.375 (9.5)
3SF1074L	109975	1.0	200-240/1	60	1750	D/G	8.8/8.3	21.5/25.8	14/3	SOW	0.530 (13.5)

IMPORTANT !

- 1.) **DO NOT USE TO PUMP FLAMMABLE LIQUIDS.**
- 2.) INSTALLATIONS SUCH AS DECORATIVE FOUNTAINS OR WATER FEATURES PROVIDED FOR VISUAL ENJOYMENT MUST BE INSTALLED IN ACCORDANCE WITH THE NATIONAL ELECTRIC CODE ANSI/NFPA 70 AND/OR THE AUTHORITY HAVING JURISDICTION. THIS PUMP IS NOT INTENDED FOR USE IN SWIMMING POOLS, RECREATIONAL WATER PARKS, OR INSTALLATIONS IN WHICH HUMAN CONTACT WITH PUMPED MEDIA IS A COMMON OCCURRENCE.

Submersible Fountain Pumps

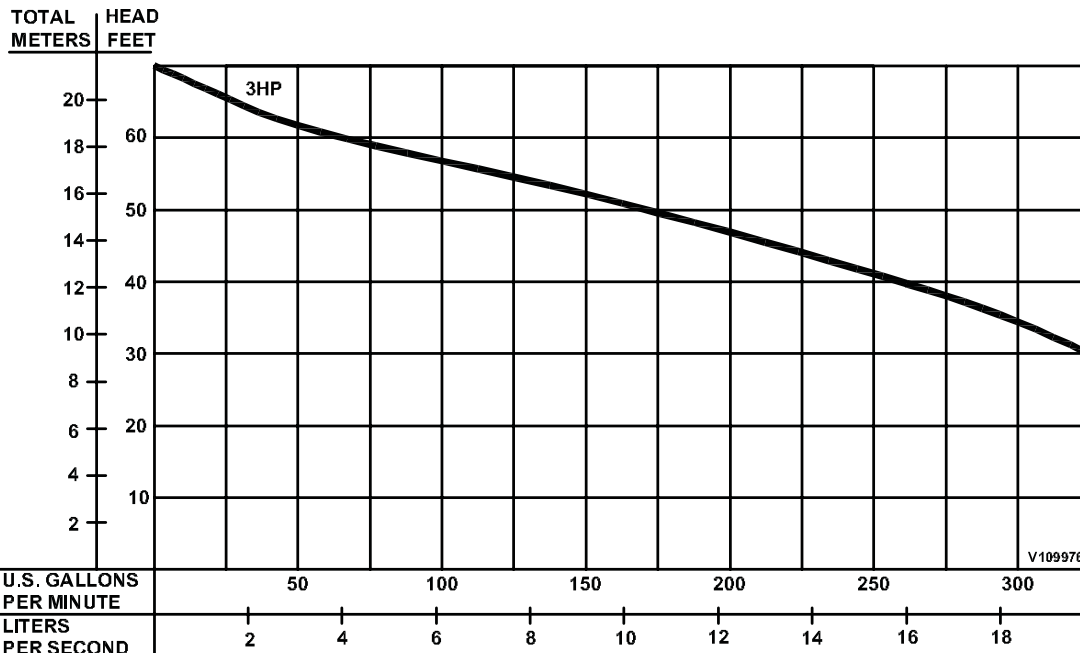
DISCHARGE	3" NPT, Female, Vertical
LIQUID TEMPERATURE	104°F (40°C) Continuous
VOLUTE	Cast Iron ASTM A-48, Class 30
MOTOR HOUSING	Cast Iron ASTM A-48, Class 30
SEAL PLATE	Cast Iron ASTM A-48, Class 30
IMPELLER: Design	2 Vane open, with pump out vanes on back side. Dynamically balanced, ISO G6.3
<i>Material</i>	Cast Iron ASTM A-48, Class 30
SHAFT	416 Stainless Steel
SQUARE RINGS	Buna-N
HARDWARE	300 Series Stainless Steel
PAINT	Air Dry Enamel
SEAL: Design	Single Mechanical
<i>Material</i>	Carbon/Ceramic/Buna-N
	Hardware -300 Series Stainless
CORD ENTRY	25 ft. (7.6m) Cord Pressure Grommet for sealing and strain relief
UPPER BEARING	Single Row, Ball, Oil Lubricated
LOWER BEARING	Single Row, Ball, Oil Lubricated
MOTOR: Design	NEMA L Torque curve, Oil Filled, Squirrel cage Induction
<i>Insulation</i>	Class B
SINGLE PHASE	Permanent Split Capacitor (PSC). Includes thermal overload protection in motor
OPTIONAL EQUIPMENT	Seal Material, Additional cord and Impeller trims



Series: 3SF-L
3.0HP, 1750RPM, 60Hz

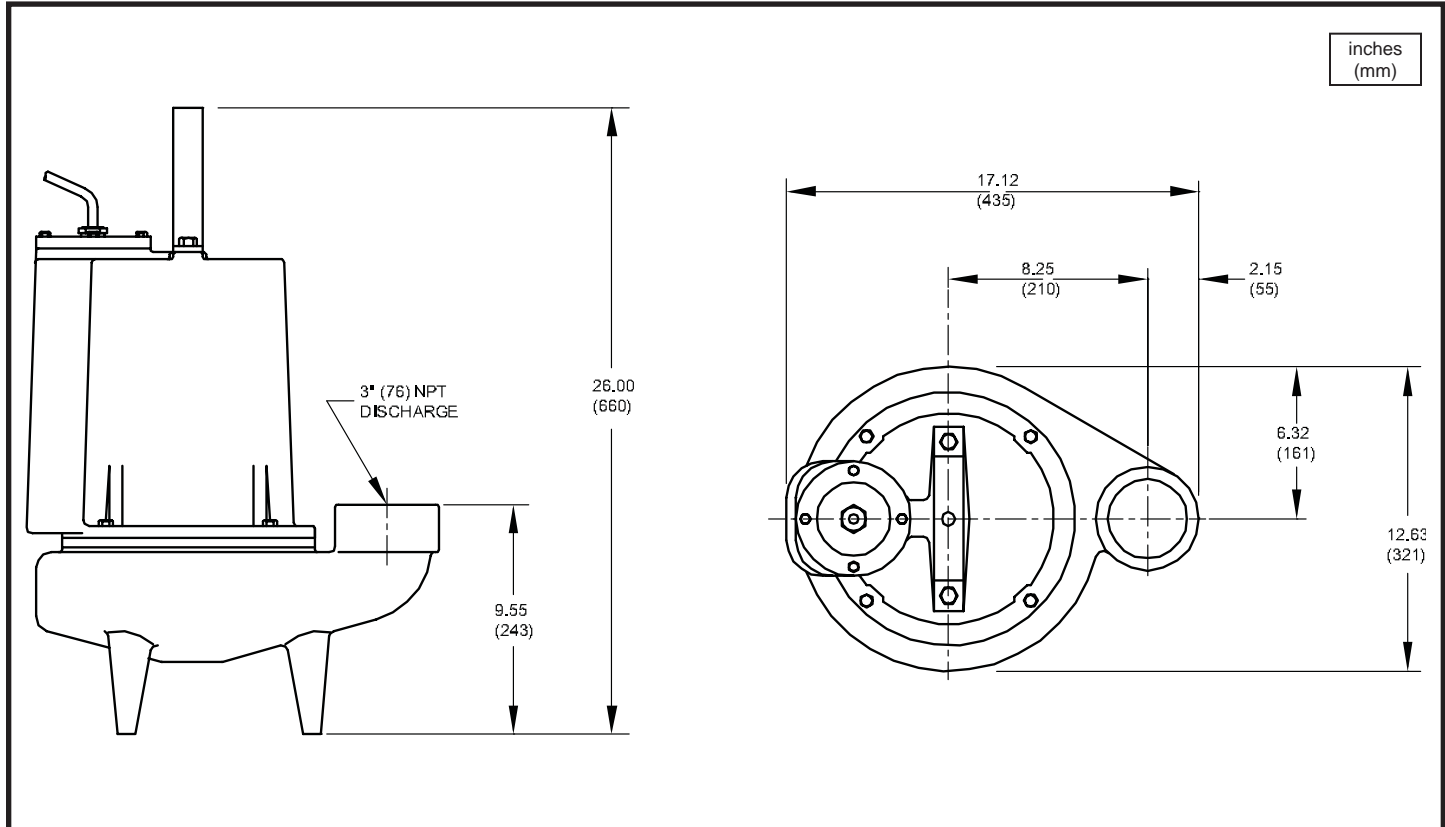


DESCRIPTION:
THESE PUMP ARE SPECIALLY DESIGNED FOR USE IN
DRAMATIC, DECORATIVE WATER DISPLAYS



Testing is performed with water specific gravity of 1.0 @ 68°F (20°C), other fluids may vary performance

Submersible Fountain Pumps



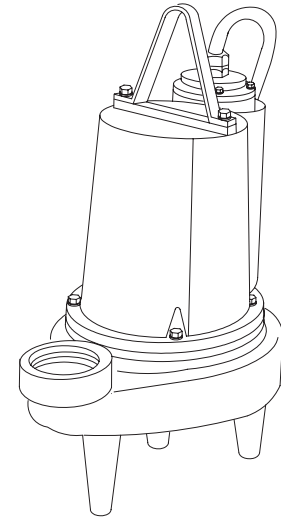
MODEL NO	PART NO	HP	VOLT/PH	Hz	RPM (Nom)	NEMA START CODE	FULL LOAD AMPS	LOCKED ROTOR AMPS	CORD SIZE	CORD TYPE	CORD O.D. inch (mm)
3SF3024L	109977	3.0	230/1	60	1750	A	28.0	59.0	10/3	SO	0.690 (17.5)

IMPORTANT !

- 1.) **DO NOT USE TO PUMP FLAMMABLE LIQUIDS.**
- 2.) INSTALLATIONS SUCH AS DECORATIVE FOUNTAINS OR WATER FEATURES PROVIDED FOR VISUAL ENJOYMENT MUST BE INSTALLED IN ACCORDANCE WITH THE NATIONAL ELECTRIC CODE ANSI/NFPA 70 AND/OR THE AUTHORITY HAVING JURISDICTION. THIS PUMP IS NOT INTENDED FOR USE IN SWIMMING POOLS, RECREATIONAL WATER PARKS, OR INSTALLATIONS IN WHICH HUMAN CONTACT WITH PUMPED MEDIA IS A COMMON OCCURRENCE.

Submersible Fountain Pumps

DISCHARGE	3" NPT, Female, Vertical
LIQUID TEMPERATURE	104°F (40°C) Continuous
VOLUTE	Cast Iron ASTM A-48, Class 30
MOTOR HOUSING	Cast Iron ASTM A-48, Class 30
SEAL PLATE	Cast Iron ASTM A-48, Class 30
IMPELLER: Design	2 Vane open, with pump out vanes on back side. Dynamically balanced, ISO G6.3
Material	Cast Iron ASTM A-48, Class 30
SHAFT	416 Stainless Steel
SQUARE RINGS	Buna-N
HARDWARE	300 Series Stainless Steel
PAINT	Air Dry Enamel
SEAL: Design	Inboard Single Mechanical, Oil Filled reservoir
Material	Carbon/Ceramic/Buna-N
	Hardware -300 Series Stainless
CORD ENTRY	25 ft. (7.6m) Cord Pressure Grommet for sealing and strain relief
UPPER BEARING	Single Row, Ball, Oil Lubricated
LOWER BEARING	Single Row, Ball, Oil Lubricated
MOTOR: Design	NEMA L Torque curve, Oil Filled, Squirrel cage Induction
Insulation	Class B
SINGLE PHASE	Permanent Split Capacitor (PSC). Includes thermal overload protection in motor
OPTIONAL EQUIPMENT	Seal Material, Additional cord and Impeller trims

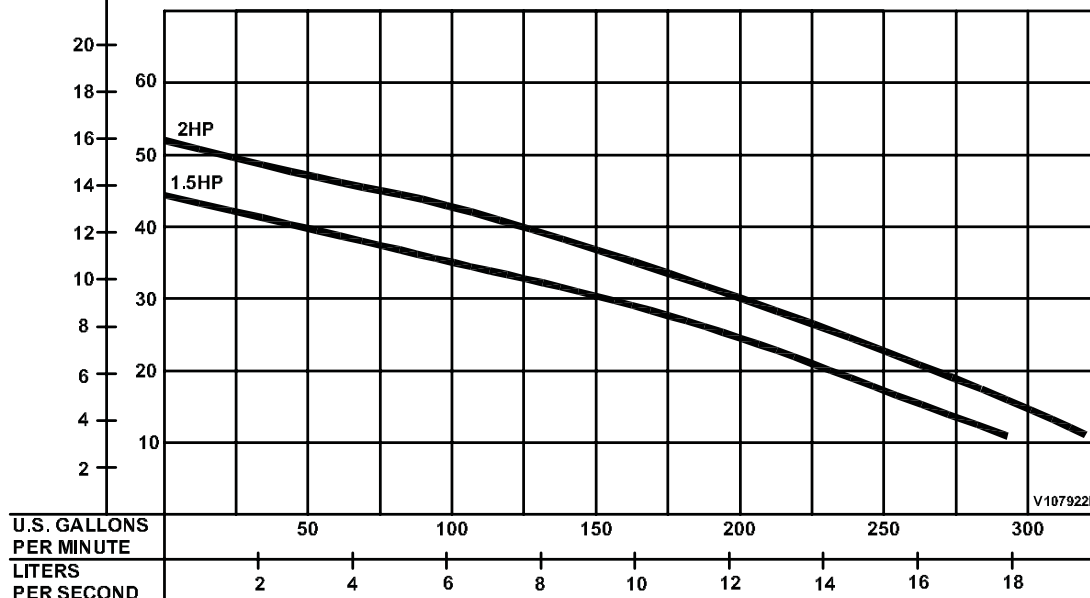


Series: 3SF-HD (Heavy Duty)
1.5 & 2HP, 1750RPM, 60Hz



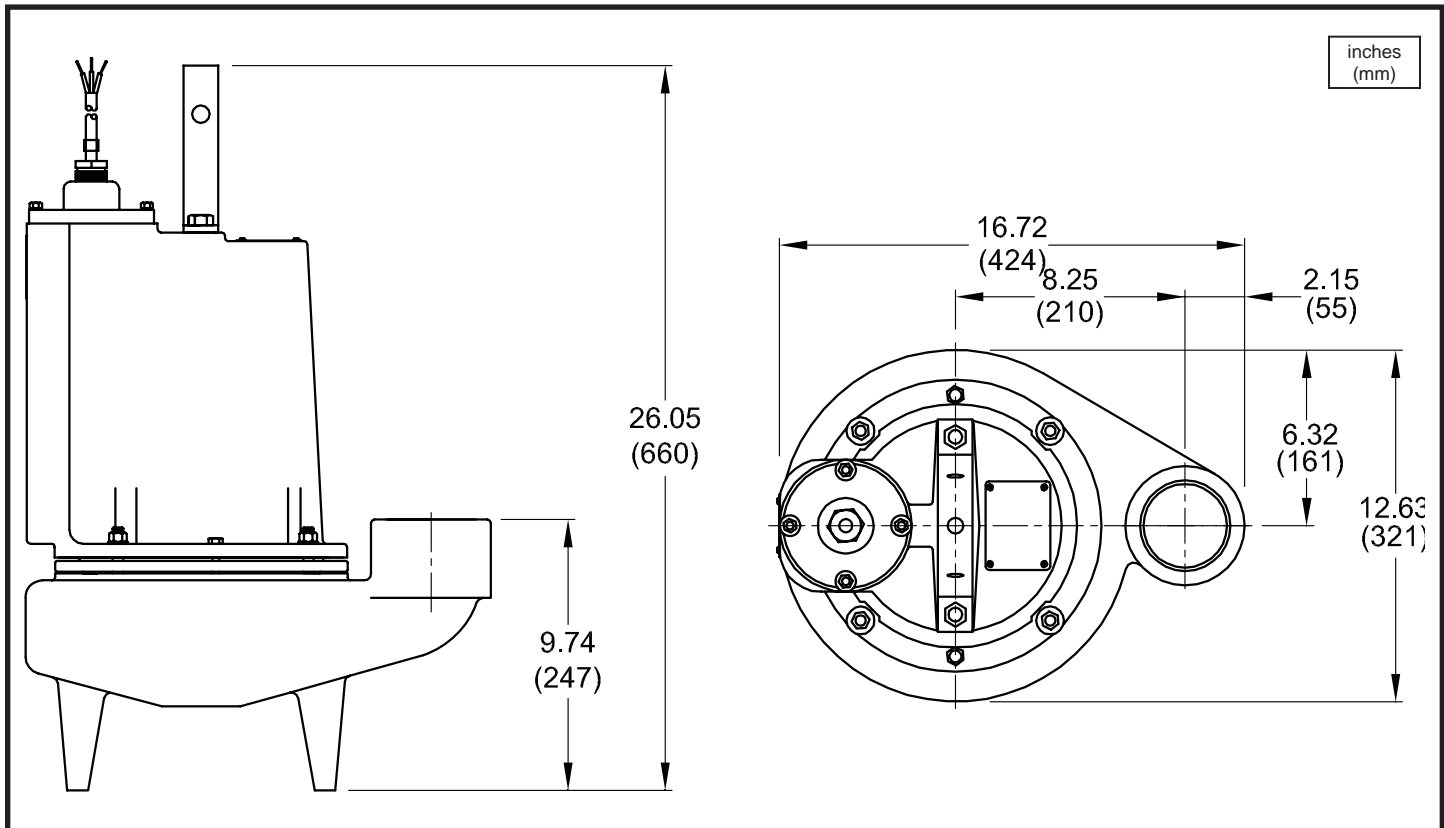
DESCRIPTION:
THESE PUMP ARE SPECIALLY DESIGNED FOR USE IN
DRAMATIC, DECORATIVE WATER DISPLAYS

TOTAL HEAD
METERS FEET



Testing is performed with water specific gravity of 1.0 @ 68°F (20°C), other fluids may vary performance

Submersible Fountain Pumps



MODEL NO	PART NO	HP	VOLT/PH	Hz	RPM (Nom)	NEMA START CODE	FULL LOAD AMPS	LOCKED ROTOR AMPS	CORD SIZE	CORD TYPE	CORD O.D. inch (mm)
3SF1524HD	110952	1.5	230/1	60	1750	B	12.6	23.0	10/3	SO	0.690 (17.5)
3SF2024HD	110953	2.0	230/1	60	1750	B	14.5	29.0	10/3	SO	0.690 (17.5)

IMPORTANT !

- DO NOT USE TO PUMP FLAMMABLE LIQUIDS.**
- INSTALLATIONS SUCH AS DECORATIVE FOUNTAINS OR WATER FEATURES PROVIDED FOR VISUAL ENJOYMENT MUST BE INSTALLED IN ACCORDANCE WITH THE NATIONAL ELECTRIC CODE ANSI/NFPA 70 AND/OR THE AUTHORITY HAVING JURISDICTION. THIS PUMP IS NOT INTENDED FOR USE IN SWIMMING POOLS, RECREATIONAL WATER PARKS, OR INSTALLATIONS IN WHICH HUMAN CONTACT WITH PUMPED MEDIA IS A COMMON OCCURRENCE.