

Self-Priming Accessories

Specifications:

PUMP DISCH. PRESSURE	35 PSI Max.
OUTLET	1.50" (38mm) NPT
TOP VALVE BODY	Cast Iron
BOTTOM VALVE BODY	Cast Iron
SEAL RING	Cast Iron
GASKET	Non-Asbestos Compressed Fiber, Nitrile Binder
HARDWARE	Stainless Steel
BALL	Rubber

SIZING:

Flow rate is predetermined, by using different ball weights for each connection size. Match the connection size of the Air Bleed Valve to the connection for the Air Bleed valve on the pumps' discharge.

Features:

The Air Bleed Valve is designed to allow air in the suction piping leg to be expelled from the pump body during the priming cycle. After the pump is primed, the valve closes to prevent wasteful recirculation of water. At the start of the priming cycle the valve is in the open position. When priming is complete, and air flow thru the valve is replaced with liquid flow, the ball rises and seats in the seal ring totally closing off the air bleed line.

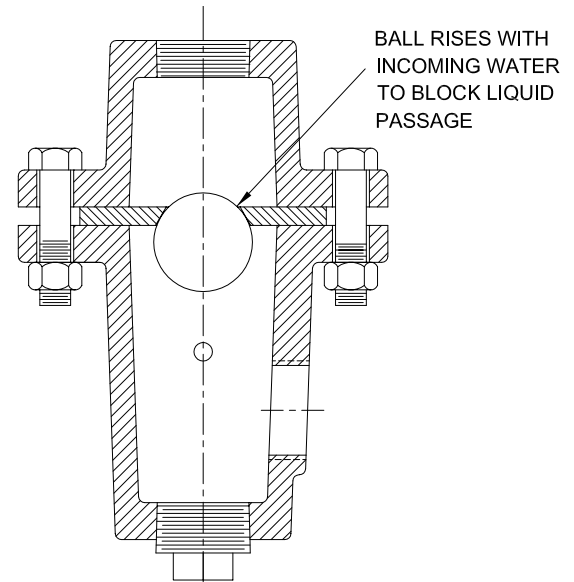
The Air Bleed Valve consists of a rubber ball housed in a cast iron body with a cast iron seal ring separating the top and bottom halves of the body and bolted together with stainless steel hardware.

The bottom half of the valve body has a 1.50 inch (38mm) NPT cleanout and a pin to keep the rubber ball from restricting the inlet port. The top half has a 1.50 inch (38mm) NPT outlet for return line to the wet well.

Air Bleed Valve assembly comes with a gate valve and all the piping necessary to connect the air bleed valve to the discharge spool on the pump.

Why Is It Needed?

A self-priming centrifugal pump will not prime if there is a static liquid head or any sort of back pressure device on the discharge side of the pump. It is therefore necessary to open the discharge side of the centrifugal pump to atmospheric pressure to allow the air to bleed off during the priming cycle. If this line is not closed after the pump is primed, liquid will flow back to the sump through the air bleed line under the full discharge head of the pump, causing the pump to waste power by reason of recirculating water.



Connection Size: .75 (19mm)

P/N: 086754

Connection Size: 1.00 (25mm)

P/N: 086755

Connection Size: 1.25 (32mm)

P/N: 086756

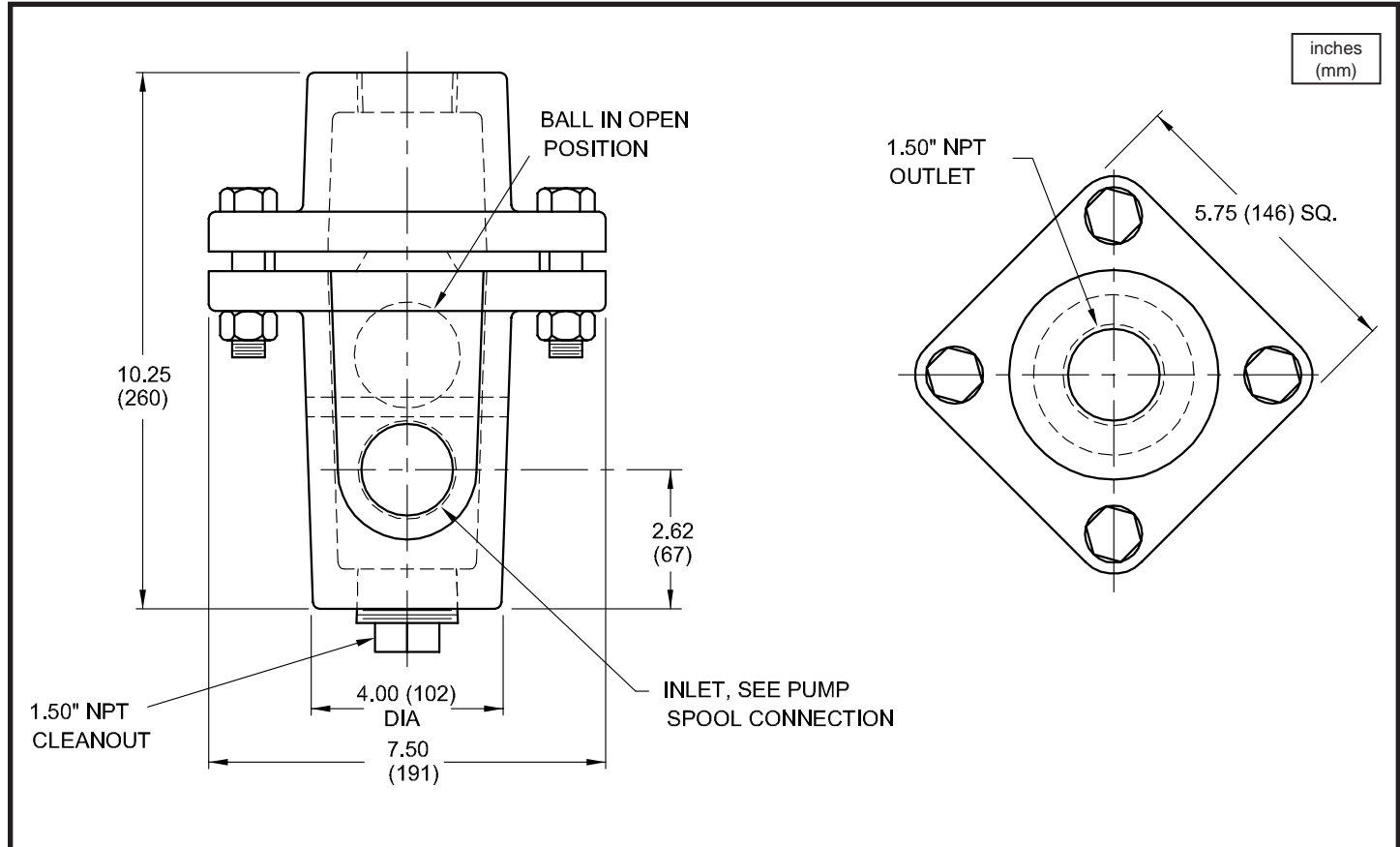
Air Bleed Valve

Connection Sizes: .75", 1.00" & 1.25"

BARNES®

www.cranepumps.com

Self-Priming Accessories



CONNECTION SIZE	PART No.	
.75 (19)	086754	
1.00 (25)	086755	
1.25 (32)	086756	

SECTION 6
PAGE 2
DATE 4/05

CRANE
A Crane Co. Company

PUMPS & SYSTEMS

USA: (937) 778-8947 • Canada: (905) 457-6223 • International: (937) 615-3598