

Specifications:

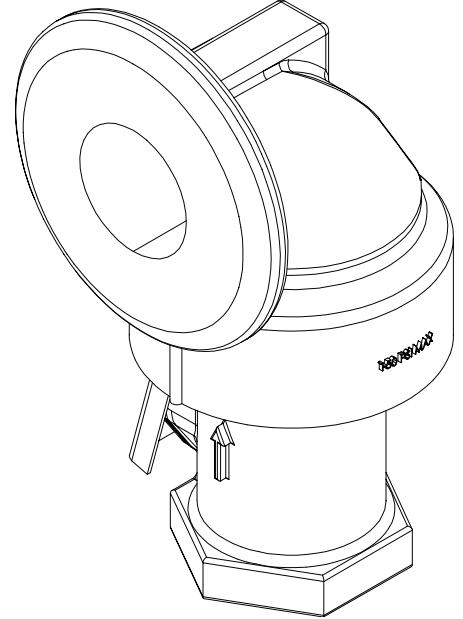
HOUSING ASTM Class 30 Cast Iron, Powder Coated
FLAPPER Nitrile, Nylon Reinforced
TEMPERATURE: 160°F (71°C) continuous
PRESSURE RATING 150 Lbs./Sq. In.(10.6 kgs/sq. cm)

FEATURES:

- Works in BARNES standard "C" Channel Rail
- Full port check with minimum head loss
- 18" static head requirement for minimum seat
- Valve includes integrated anti-siphon
- 300 series stainless steel hardware
- Integrated upper moveable fitting
- Resilient seat flapper
- Quiet operation
- No maintenance
- Vertical position mounting

APPLICATIONS:

Waste water or residential sewage, liquid manure, etc.



**Cast Iron Flap Style Check Valve/Upper
Moveable Fitting**

1¼" P/N: 112354

2" P/N: 115254

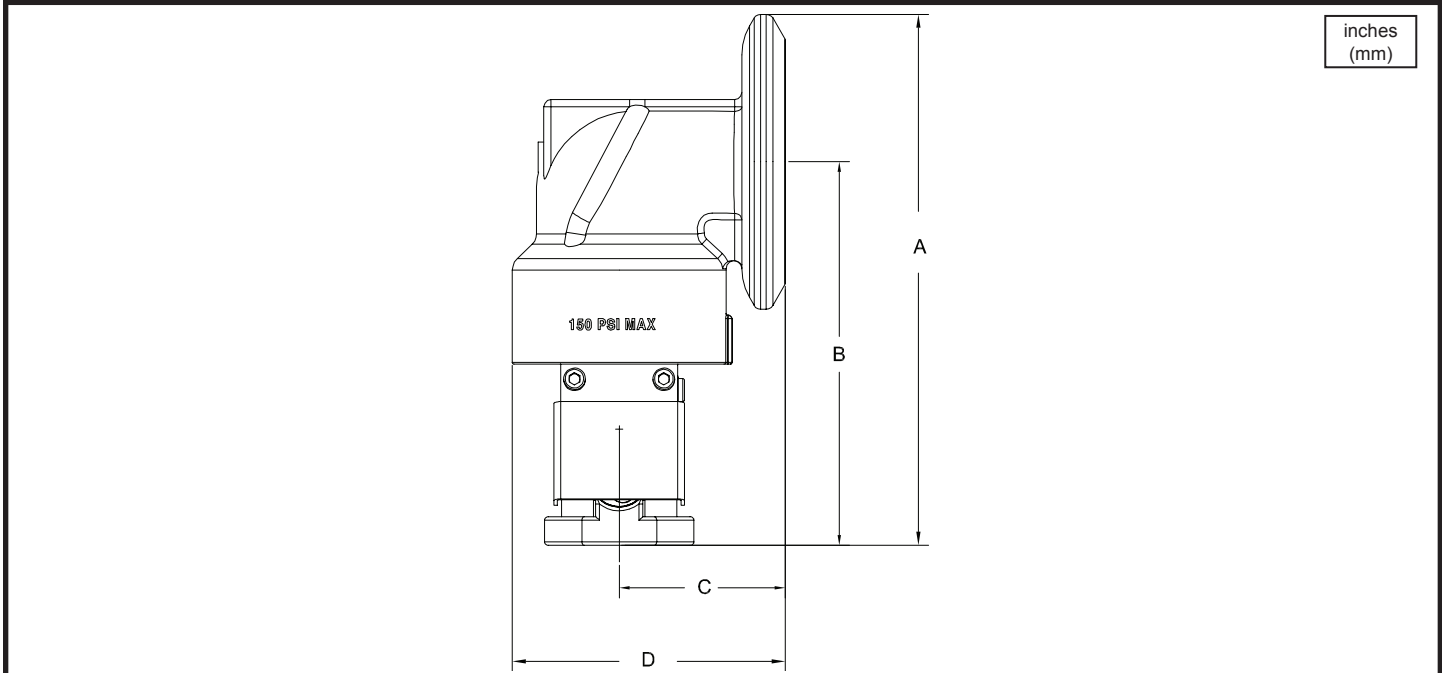
Flap Style Check Valve /Upper Moveable

1 1/4" and 2", For use with "C" Channel Rails

BARNES®

www.cranepumps.com

Basins & Accessories



SIZE NPT	PART NO	A	B	C	D	WEIGHT LBS
1 1/4"	112354	9.23 (234)	6.39 (162)	2.89 (73)	4.74 (120)	13.0 (5.9kg)
2"	115254	10.18 (259)	7.65 (194)	3.06 (78)	5.34 (136)	14.7 (6.7kg)

SECTION C
PAGE 20
DATE 4/05

CRANE®

A Crane Co. Company

PUMPS & SYSTEMS

USA: (937) 778-8947 • Canada: (905) 457-6223 • International: (937) 615-3598

Specifications:

1¼" & 2", Cast Iron

HOUSING ASTM Class 30 Cast Iron
BALL Natural Rubber
PLUG..... Schedule 40 PVC
TEMPERATURE 150°F (51°C) and a potential peak of 100°C.
PRESSURE TEST..... 100 Lbs./Sq. In.(7.0 kgs/sq. cm).

P/N: 1¼" NPT 077881
 P/N: 2" NPT 077882

1¼" & 2" NPT, PVC

HOUSING PVC
BALL Nitrile or Buna-N
PLUG..... PVC
TEMPERATURE 150°F (51°C)
PRESSURE TEST..... 100 Lbs./Sq. In.(7.0 kgs/sq. cm).

P/N: 1¼" NPT 085448
 P/N: 2" NPT 089874

4" & 6" Flanged, Cast Iron

HOUSING ASTM Cast Iron
SEAL..... Natural Rubber
BALL Natural Rubber Covered Hollow Iron
HARDWARE 18-8 Stainless Steel
ACCESS PLATE ASTM Class 30 Cast Iron
TEMPERATURE 176°F (80°C)
PRESSURE TEST..... 125 Lbs./Sq. In.(8.8 kgs/sq. meter).

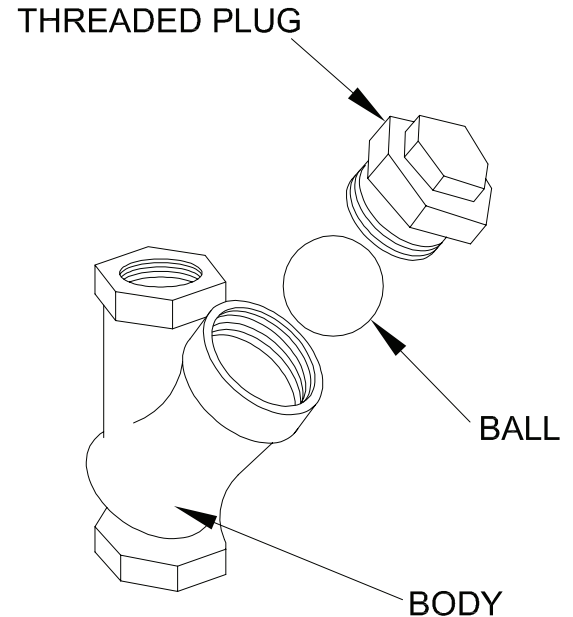
P/N: 4" 077689
 P/N: 6" 077690

FEATURES:

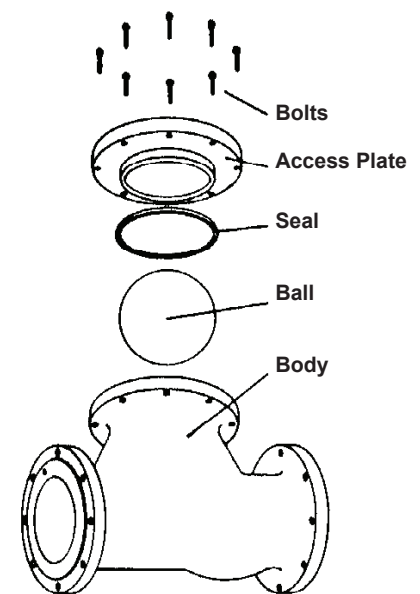
- Works both vertically and horizontally (in the latter case, place the "bulge" in the "up" position, thus the ball returns to its seat by the pull of gravity).
- Ball has sufficient weight to seat tightly and moves freely to open.
- Low headlosses as the ball is set completely to one side at a maximum rate of flow
- Works in silence.
- No maintenance.
- Easy dismantling.
- Supplied with clean out port and plug.

APPLICATIONS:

Waste water or fluids of varying viscosity, liquid manure, etc.



Ball Check Valves
1¼" & 2" NPT, Cast Iron & PVC



Ball Check Valves
4" & 6" Flanged, Cast Iron

Ball Check Valves

1 1/4" & 2" NPT, Cast Iron

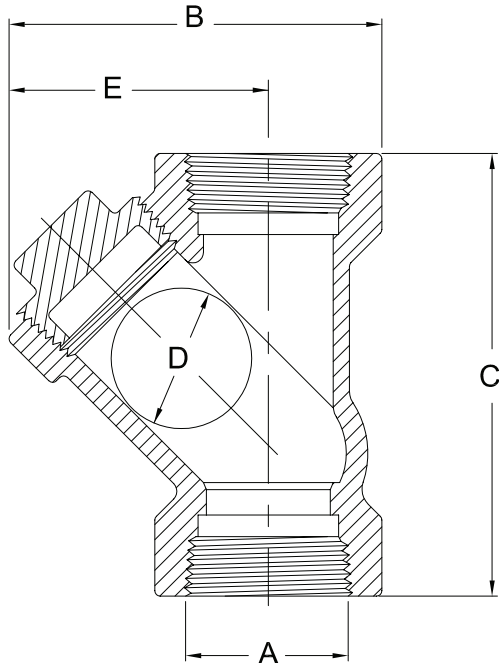
1 1/4" & 2" NPT PVC

BARNES®

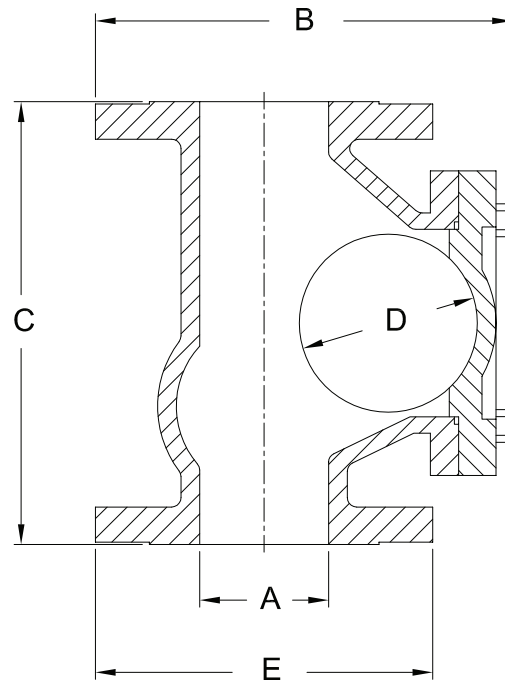
www.cranepumps.com

Basins & Accessories

1-1/4" & 2" NPT Ball Valves



4" & 6" Flanged Ball Valves



inches
(mm)

SIZE A	PART NO	MATERIAL	WIDTH B	LENGTH C	BALL DIA D	E	BOLT CIRCLE	WEIGHT LBS
1 1/4" NPT	077881	Cast Iron	4.50 (114)	5.00 (127)	1.62 (41)	3.00 (76)	N/A	4.5 (2.0kg)
1 1/4" NPT	085448	PVC	4.50 (114)	5.63 (143)	1.50 (38)	-----	N/A	1.0 (0.46kg)
2" NPT	077882	Cast Iron	6.00 (152)	6.87 (175)	2.50 (64)	4.25 (107)	N/A	9.0 (4.1kg)
2" NPT	089874	PVC	6.50 (165)	7.06 (179)	2.50 (64)	-----	N/A	1.5 (0.68kg)
4" Flange	077689	Cast Iron	11.12 (282)	11.81 (300)	4.75 (121)	9.00 (229)	7.50 (191)	65 (30kg)
6" Flange	077690	Cast Iron	15.68 (398)	16.56 (421)	7.25 (184)	11.00 (279)	9.50 (241)	132 (60kg)

SECTION C
PAGE 22
DATE 10/13

CRANE®

A Crane Co. Company

PUMPS & SYSTEMS

USA: (937) 778-8947 • Canada: (905) 457-6223 • International: (937) 615-3598

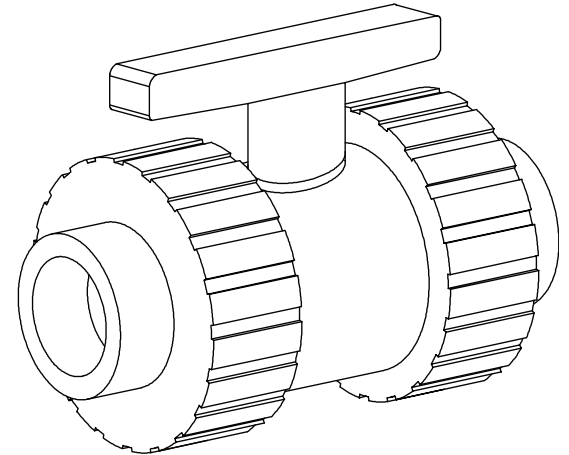
Specifications:

True Union Ball Valves:

The True Union Ball Valves are manufactured of Type I Schedule 80 PVC, (Cell Classification 12454-B) with EPDM O-rings for superior chemical and corrosion resistance. These valves are rated at 150 PSI, (10.6 kgs/sq. cm) non-shock, with a maximum operating pressure at 73°F (23°C). The valves are of quick disconnect design for maintenance and can be repairable to the component level, also full port bore, 1/4 turn, leak tight shut-off and are listed by NSF for use in portable water service.

Extension Handle:

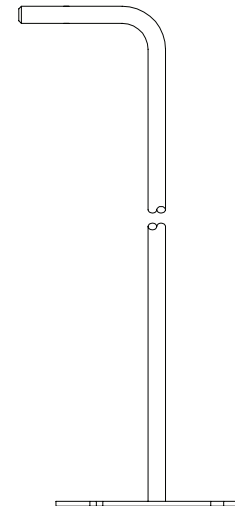
Made from 3/8" (10mm) diameter 300 series stainless steel and can be used with 1¼" NPT and 2" NPT true union ball valves.



True Union Valves

1¼" NPT P/N: 085115

2" NPT P/N: 089873



Extension Handles

P/N's: 094780 thru 094788

True Union Ball Valves

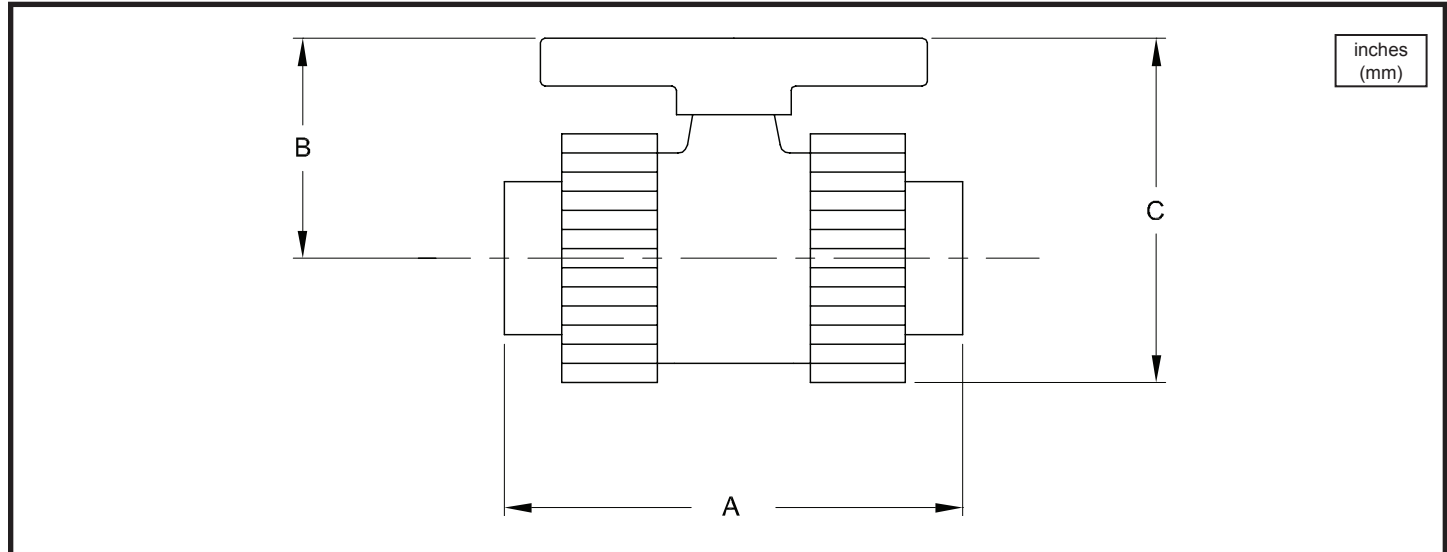


1 1/4" NPT & 2" NPT

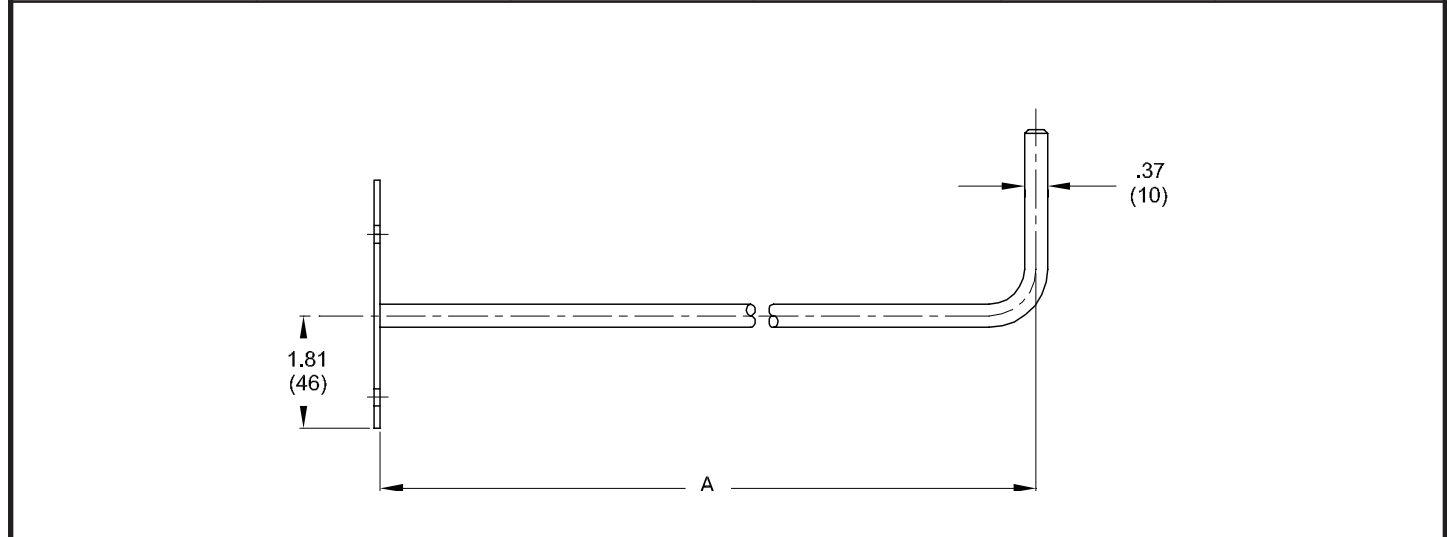
Extension Handles for basin depths 48" thru 120" (1.2 thru 3m)

www.cranepumps.com

Basins & Accessories



PART NO.	NOMINAL SIZE	A	B	C	WEIGHT LBS. (kg)
085115	1-1/4" NPT	7.00 (178)	3.03 (77)	3.97 (101)	2.0 (1)
089873	2" NPT	7.38 (188)	4.25 (108)	5.25 (133)	5.5 (2.5)



PART NO.	BASIN DEPTH	LENGTH "A"
094780	42 (1219)	12 (305)
094781	60 (1524)	24 (610)
094782	72 (1829)	26 (914)
094783	78 (1981)	42 (1067)
094784	84 (2134)	48 (1219)
094785	90 (2286)	54 (1372)
094786	96 (2438)	60 (1524)
094787	108 (2743)	72 (1829)
094788	120 (3048)	84 (2134)

PART NO.	BASIN DEPTH	LENGTH "A"
097868	132 (3353)	96 (2438)
097003	144 (3658)	108 (2743)
095287	156 (3962)	120 (3048)
097327	168 (4267)	132 (3353)
098090	180 (4572)	144 (3658)
098091	192 (4877)	156 (3962)
099191	204 (5182)	168 (4267)

SECTION C
PAGE 24
DATE 4/05



PUMPS & SYSTEMS

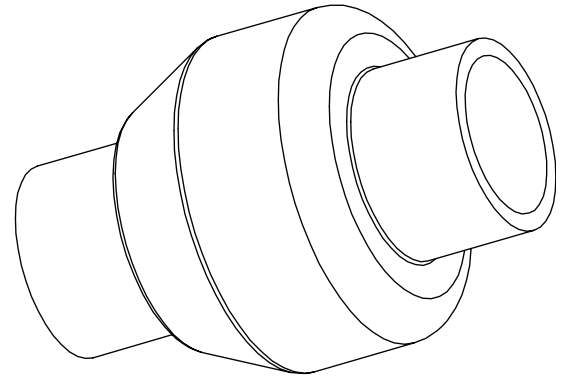
A Crane Co. Company

USA: (937) 778-8947 • Canada: (905) 457-6223 • International: (937) 615-3598

Specifications:

The Swing Check Valve is made of high-impact Sch. 40 PVC type II material which is useful in systems where fluid is corrosive or contains debris, industrial waste disposal, sewage, etc. The EPDM swing gate lifts to provide unobstructed flow. There are no internal metallic parts to corrode. Only 1/2 pound back pressure is required for complete closure. Swing Check flow loss is insignificant due to full port design. Complies with all applicable ASTM & ANSI standards.

Swing Check is not recommended to be installed with outlet side angled down or facing down.



Swing Check Valves:

1¼" P/N: 085116

1½" P/N: 084132

2" P/N: 101241