

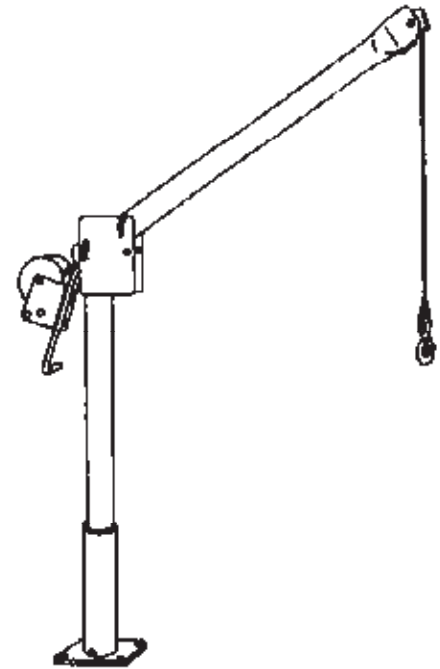
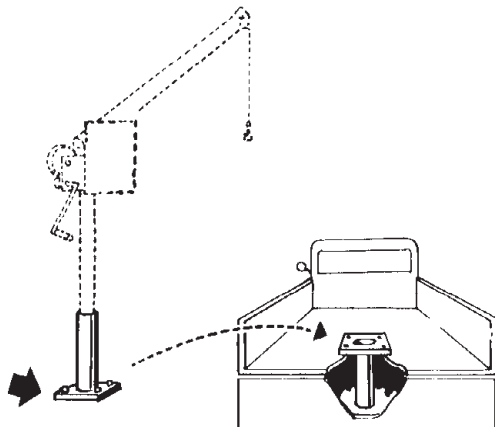
Specifications:

CABLE	With Snap Hook
<i>Length</i>	36 ft. (11M)
<i>Diameter</i>	3/16 in. (5mm)
<i>Material</i>	Stainless Steel
LOAD RATING	500 lbs. (227kg)
MAXIMUM LIFT	62 in. (1575mm)
	(Varies with size of the load)
MAXIMUM REACH	43 in. (1092mm)
ROTATION	Boom rotates 360° for horizontal load movement.
BOOM	Angle adjusts to 2 positions, and folds down for storage.
MOUNTING BOLTS	3/8 in. (10mm)
OPTIONAL EQUIPMENT	Additional bases, P/N: 076104.

In a typical application, one base is installed at each pump station, the hoist is designed to be moved from pump station to pump station, to raise and lower Submersible Grinder or Effluent Pumps **ONLY**.

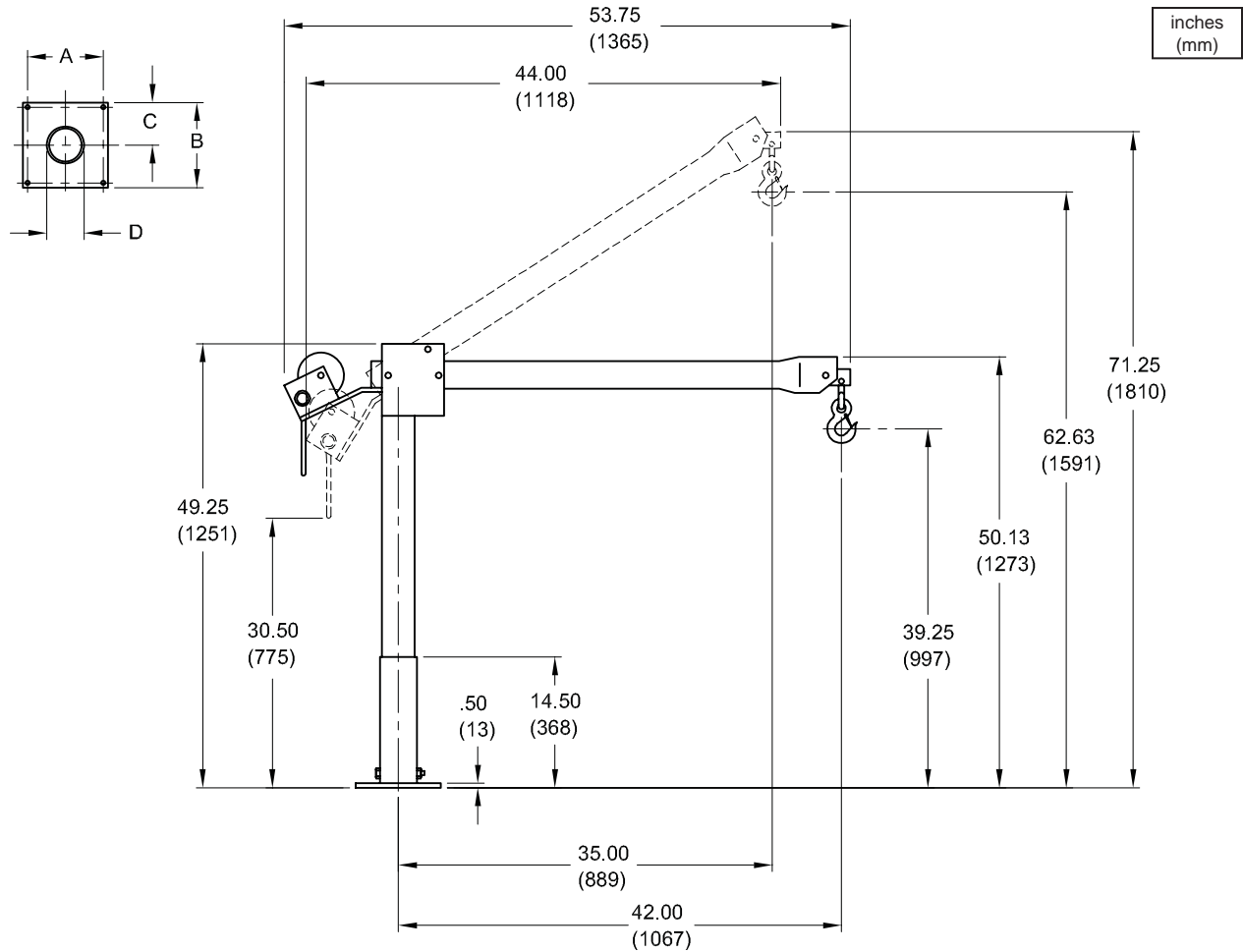
Hand winch features machine cut spur gears for long life, large diameter drum to help minimize cable wear, equipped with a disc brake for load control, boom rotates on rollers and Nylatron bearing sleeve in base. Base mounts to floor or truck bed, can be installed upright or recessed.

Mast, boom and base have a fusibond electrostatic finish; fasteners and pins are stainless steel, winch and sheaves are iridescent dichromate plated.



Pump Hoist
P/N: 075469

Basins & Accessories



PART No.	A	B	C	D	CRANE WEIGHT	BASE WEIGHT
075469	7.50 (191)	8.00 (203)	4.00 (102)	4.00 (102)	87 (40 kg)	14 (6.4 kg)

Specifications:

- CABLE** With Stainless Steel Eye Hook and swagged ball fitting
Length 36 ft. (11m)
Diameter 1/4 in. (6mm)
Material Stainless Steel
- ROTATION** Crane rotates 360° on a pin and sleeve bearing in the base. Handle on boom makes rotation easy load movement.
- BOOM** Adjustable, telescopes to 4 different lengths and adjust in height while under load with ratchet style screw-jack.
- OPTIONAL EQUIPMENT** Additional bases, (pedestal-094433, socket, or wall mount), Materials, *Cable lengths and *two part line kit for up to 2000lb capacity.

In a typical application, one pedestal base is installed at each pump station, the hoist is designed to be moved from pump station to pump station, to raise and lower submersible pumps.

Disc Brake Handle attached to the winch, gives control of the load for both lifting and lowering operations.

Spur gear hand winch with Quick Disconnect cable anchor allows operator to attach or remove cable.

Corrosion Resistant finish with electrostatic powder coating and corrosion resistant fasteners.

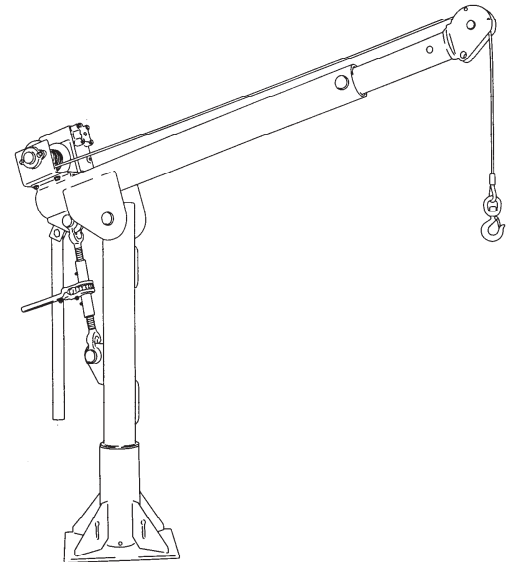
IMPORTANT INFORMATION !

Load rating will vary with wire rope length, boom position, and single or two part line configuration. Consult Factory for additional Performance Characteristics.

Base installation is purchaser's responsibility. Barnes recommends consulting a civil engineer or other qualified professional.

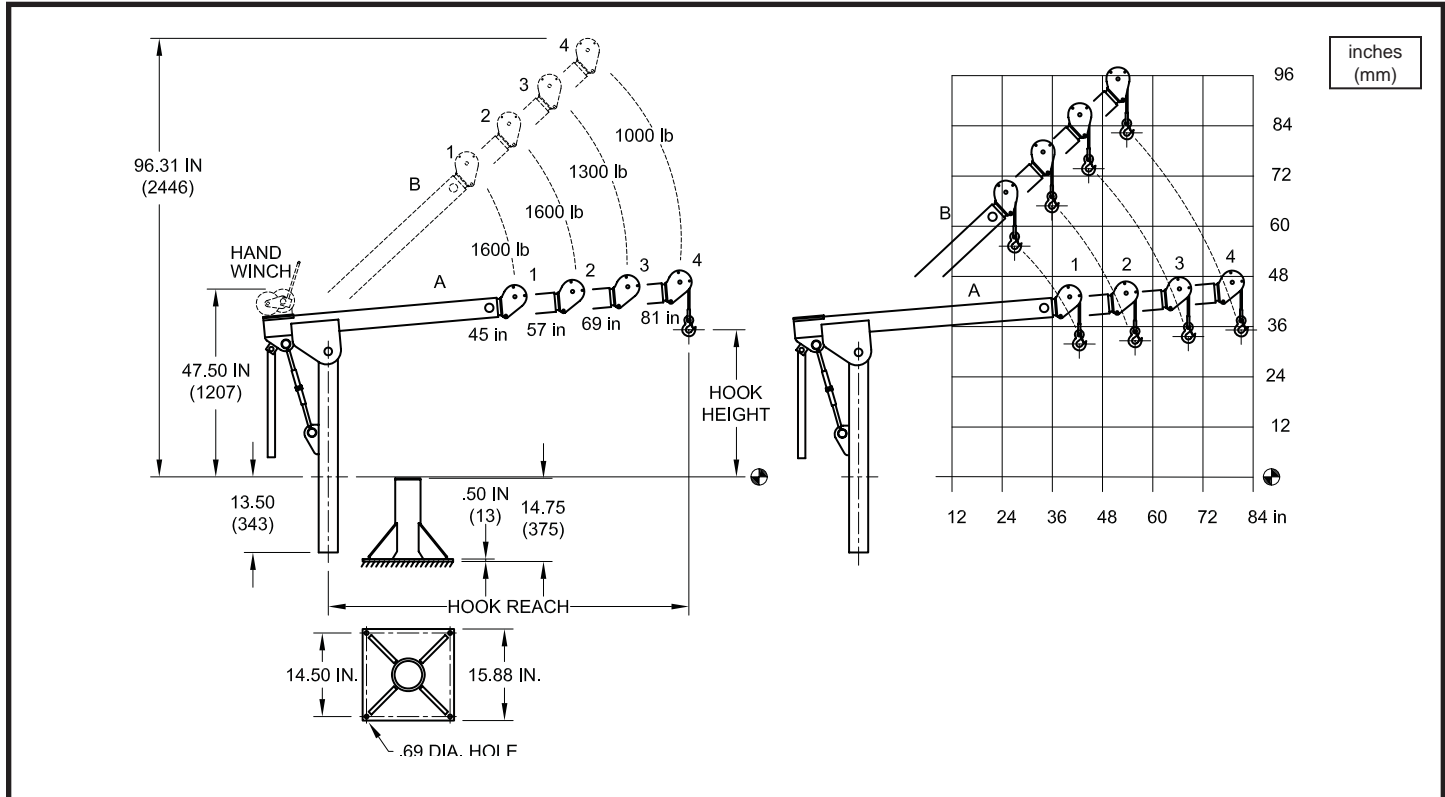
It is the owner's or operator's responsibility to determine the suitability of the equipment to its intended use. Study all applicable codes, manuals, and regulations. Be sure to read the Owner's Manual supplied with the equipment before operating it.

Crane is designed to lift rated capacity **ONLY**, if lifted weight binds or is seized, discontinue using crane until obstruction is eliminated.



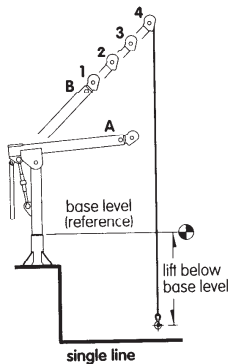
Pump Hoist
P/N: 079024

Basins & Accessories



PART No.	BOOM POSITION	HOOK REACH	HOOK HEIGHT	CRANE WEIGHT	BASE WEIGHT
079024	A-1	45 (1143)	28 (711)	300 (136 kg)	66 (30 kg)
	B-1	28 (711)	57 (1448)		
	A-2	57 (1448)	28 (711)		
	B-2	36 (914)	65 (1651)		
	A-3	69 (1753)	28 (711)		
	B-3	45 (1143)	74 (1880)		
	A-4	81 (2057)	28 (711)		
	B-4	53 (1346)	82 (2083)		

For lift below base level: at A1 add 2 ft. to B1, at A2 add 2 ft. to B2, at A3 add 3 ft. to B3, at A4 add 4 ft. to B4



PERFORMANCE CHARACTERISTICS		
Single Line		
12 - 20 feet of lift below base level		
Boom Position	Load Rating lbs. (kg)	Lift Below Base Level ft. (m)
B-1	1300 (590)	23 (7)
B-2	1300 (590)	21 (6.4)
B-3	1300 (590)	19 (5.8)
B-4	1000 (454)	17 (5.2)

Consult Factory for other Performance Characteristics