

Applications & Systems

IN BRIEF:

SITE/LOCATION:

Bradford, OH

1.0 MGD duplex lift station outfitted with Flygt CP3152 20 HP 460V 6" discharge pumps rated for 700 GPM at 66 Ft.

PROBLEM:

Pumps were failing due to mechanical seal leaks, causing the pumps to shut down without notice. Additionally, service by the Manufacturer's technician was not prompt enough to satisfy the Village, and they believed the cost of repair parts were exorbitant.

SOLUTION:

Crane Pumps & Systems developed a solution by providing an SHMD pump with a 25 HP motor, a slide rail adapter that fits the Flygt base elbow assembly and a MiniCAS Replacement Relay. This device not only affords connection to the existing control panel but also provides warning of impending seal issues with alarm connection to Bradford's SCADA system.

"The detachable cable will make maintenance MUCH easier!"

- Jay Roberts, Operator

CRANE

PUMPS & SYSTEMS

Solving Maintenance Issues at Wise Street Pump Station



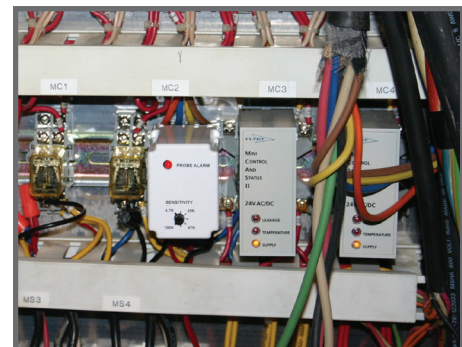
The Barnes® SH Series Solution

The Village of Bradford, OH was experiencing random failures of their Flygt 6" discharge pumps. The pumps would go down due to mechanical seal failure with no prior notice. Bradford's primary operator, Jay Roberts, was frustrated since replacing the proprietary seals averaged nearly \$3,000 per pump and took weeks to repair, causing severe strain to their maintenance budget.

Roberts needed to find a pump that would provide warning of impending seal problems and be faster and less expensive to repair, while maintaining excellent clog resistance. Crane Pumps & Systems offered a Barnes 4SHMD pump for this lift station.

CP&S provided a 4"x6" slide rail adapter designed to fit the Flygt 6" base elbow. They also supplied a "MiniCAS Adapter Relay" and external relays for use in the existing control panel to connect moisture and temperature alarms to Bradford's SCADA system.

The 4SHMD pump has been installed since June, 2010. The Village of Bradford has not had any mechanical seal failures or clogging issues. Jay Roberts is very happy with his Barnes SH pump and plans to replace his other Flygt pump soon.



ADAPTER RELAY INSTALLED IN EXISTING PANEL