

omni GRIND™

CENTRIFUGAL GRINDER PUMPS

Omni Grind™ Advantages

- Recessed vortex impeller design easily handles ground solids
- Large pump end bearing and short shaft overhang significantly extends mechanical seal life
- Exclusive Slicerator™ eliminates jams
- Removable discharge flange for easier installation
- Heavy-duty 2 hp motor with oil lubricated upper and lower ball bearing is standard
- Heavy-duty industrial silicon carbide seal

Omni Grind™ Offers

- Low initial costs
- Extended MTBSC (Mean Time Between Service Calls)
- Low life-cycle cost
- Trouble-free operation

Design Features

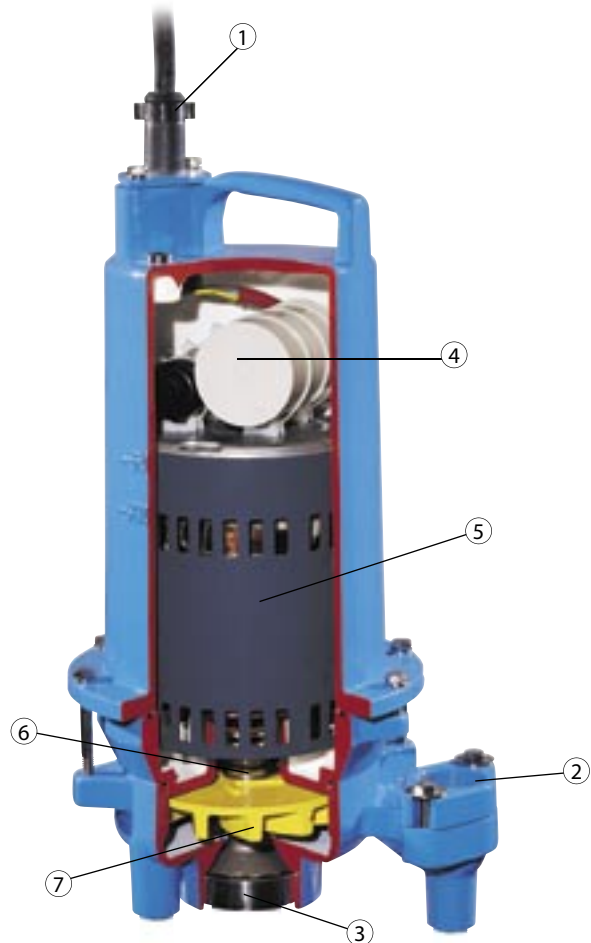
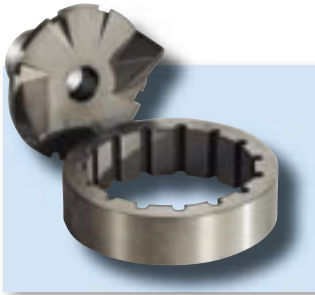
- **Higher Flow Version:** Flows to 55 gpm; heads to 104 ft shutoff
- **Higher Head Version:** Flows to 33 gpm; heads to 125 ft shutoff
- Integral level controls available with ESPS pressure switch or tethered mechanical level controls
- Oil-filled motor enables the pump motor to run cooler under severe operating conditions
- Bolt-On discharge flange design allows pump to be easily installed
- 1-1/4" NPT, vertical connection
- Built-in automatic resetting motor overload
- Quick connect power cord

Barnes® exclusive Quick-Connect Power Cord, and internally mounted starting components make the Omni Grind™ easy to install and maintain. Omni Grind™ also features a hardened stainless steel cutter and shredding ring (reversible for twice the cutting life), and abrasion resistant silicon carbide mechanical seal.



Exclusive Slicerator™

The staggered slicing action of the grinder radial cutter dramatically reduces the torque requirement of the motor, cuts with less horsepower, and increases the unit's efficiency. Eliminates clogging with particularly troublesome objects such as plastic, rubber, sanitary napkins, disposable diapers and cloth items.



Omni Grind™ Features

1. Quick disconnect cord
2. Threaded discharge flange
3. Exclusive Slicerator
4. Integral capacitors for start and run
5. Oil filled motor with overload protection
6. Silicon carbide mechanical seal for long life
7. Vortex impeller for solids handling

