

Coal City, IL

MUNICIPALITY OVERVIEW:

The Village of Coal City, IL is located approximately 60 miles Southwest of Chicago, and with a population of 6,000 people. The village's Public Works Water Department strives to provide safe drinking water & efficient sewer services for its residents & businesses. Coal City has 6 lift stations to pump waste water & its wastewater plant treats approximately 780,000 gallons per day.

PUMP STATION DETAILS:

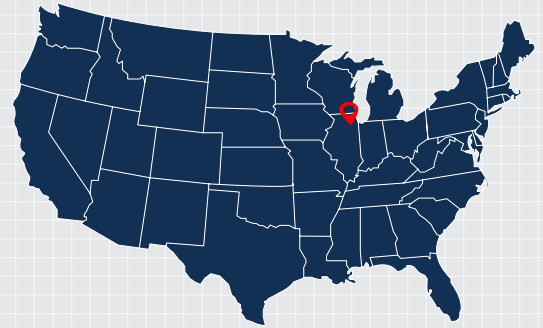
The most problematic lift station for Coal City was a duplex station on Fourth Street that receives sewage from nearby residences and light commercial establishments. The pumps in the station discharge to a gravity sewer which then flows into the treatment plant.

The station's submersible pumps were clogging since installation causing problems for Coal City's plant operators, Mr. John Huddlestun & Mr. Tyler Valiente. The non-clog pumps in the station were clogging due to dental floss, rags, underwear, dye bottles & plastic gloves. The operators tried multiple non clog pump brands including expensive pumps from overseas. The Public Works Department also attempted to educate residents to not drain non-flushable solids, with little success.

The pumps were clogging nearly every week and at times, amps would increase within 10 minutes of operation. Frustrated with clogging & high costs, Mr. Huddlestun & Mr. Valiente decided to install a submersible chopper pump in the station.

INSTALLATION:

Mr. Huddlestun & Mr. Valiente knew of the reliability of the Barnes Sithe chopper pump due to a previous positive installation and decided the Sithe would be a perfect solution for the clogging at the Fourth Street lift station. Gasvoda & Associates, Inc. (GAI), a municipal distributor of Crane Pumps & Systems, worked with the Village of Coal City to size & install a 4" 5HP Barnes Sithe chopper pump in the station in August 2018. The pump has not clogged since installation. The operators "like the Sithe chopper's plug-n-play cord" and the power cable & sensor wires all in the same cable. Mr. Huddlestun & Mr. Valiente are extremely happy with Sithe chopper pumps performance & Gasvoda's passion for solving customer problems and quality of service.



PUMP SYSTEM

Barnes Sithe Chopper Pump



OPERATIONAL IMPROVEMENT

Eliminated Clogging



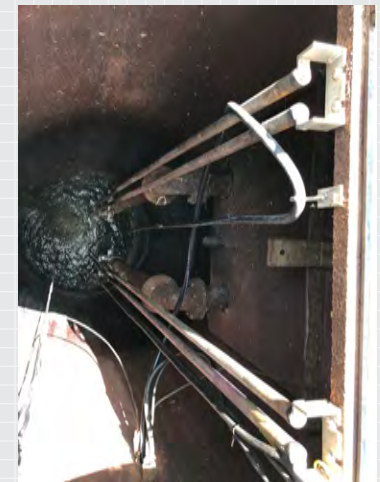
MUNICIPALITY POPULATION

6,000



INSTALL DATE

August 2018



KEY TAKEAWAYS

PAIN POINTS:

- Pumps in the Fourth Street lift station were clogging nearly every week
- Dental floss, rags, underwear, dye bottles & plastic gloves were clogging the pumps

SOLUTION:

- The city installed a 4" 5HP Sithe chopper pump in the station
- The pump has not clogged since installation