

GENERAL INFORMATION

SPECIFICATIONS

INSTALLATION DRAWINGS

5B. END SUCTION CENTRIFUGAL UNIVERSAL DRIVE

PUMP SERIES:

2020HCU

4030HCU



WARNING:

CANCER AND REPRODUCTIVE HARM -
WWW.P65WARNINGS.CA.GOV

This page intentionally left blank

End Suction Centrifugal Pumps

Specifications:

SUCTION/DISCHARGE.....2" (51mm) NPT Suction,
2" (51mm) 125 lb Flange Discharge.
Discharge can be placed in 8 different
locations depending on piping requirements.

LIQUID TEMPERATURE180°F (82°C) Continuous

BODYCast Iron ASTM, Class 30, with Air Vent,
Vacuum Pressure and Drain Plugs

PEDESTAL.....Cast Iron ASTM, Class 30

IMPELLER: DesignEnclosed Type, Dynamically Balanced,
ISO G6.3
Material81-3-7-9 Bronze

WEAR RING.....Teflon "U" Cup

SHAFT.....Steel

SHAFT SLEEVEBronze

HARDWARESteel

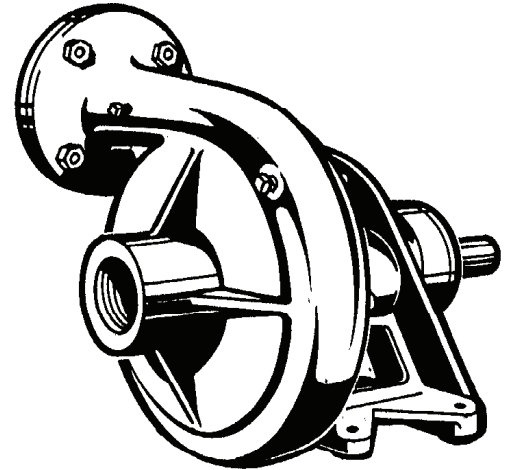
PAINTAir Dry Enamel

SEAL: *Design*Single Mechanical
LubricationSelf Lubrication
MaterialRotating Faces - Carbon
Stationary Faces - Ni-Resist
Elastomer - Buna-N
Hardware -300 Series Stainless

BEARING-PUMP END:
DesignSingle Row, Ball
LubricationGrease, Factory
LoadRadial & Thrust

BEARING-DRIVE END:
DesignDouble Row, Ball,
LubricationGrease, Factory
Load.....Radial & Thrust

OPTIONAL EQUIPMENT.....Discharge Check Valve, Hand Primer,
Base & OSHA Coupling Guard,
Flex Coupling, Strainer



Model: 2020HCU

DESCRIPTION:

THESE PUMPS ARE SUITABLE FOR GENERAL INDUSTRIAL USE SUCH AS LIQUID TRANSFER OR AS BOOSTER PUMPS.



WARNING:

CANCER AND REPRODUCTIVE HARM -
WWW.P65WARNINGS.CA.GOV

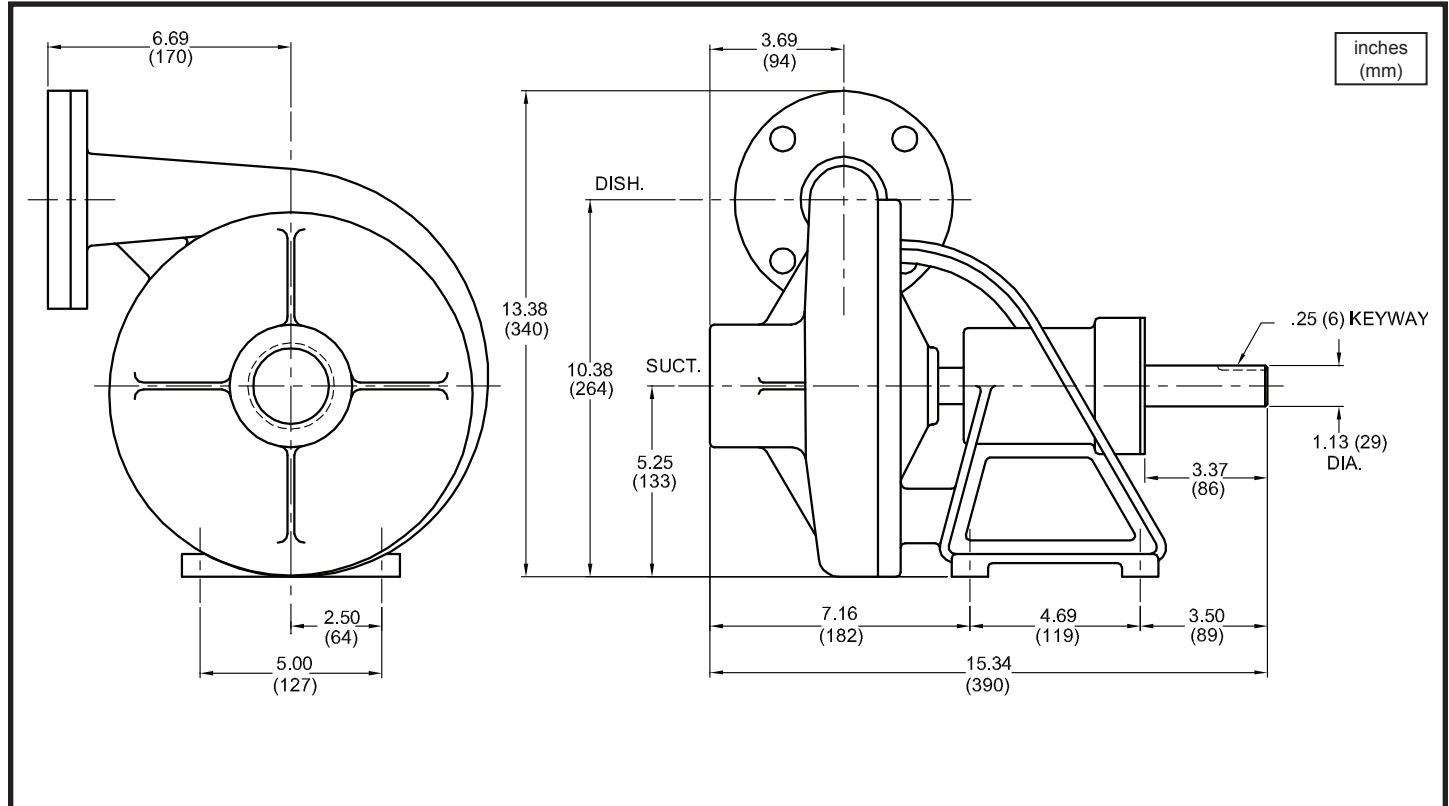
Model 2020HCU

Universal Drive

BARNES®

www.cranepumps.com

End Suction Centrifugal Pumps



MODEL NO	PART NO	WEIGHT LBS. (kg)	PEI _{CL}	
2020HCUF0C2	029676	74 (33.6)	0.97	

IMPORTANT !

- 1.) DO NOT USE FOR PUMPING FLUIDS WITH A FLASH POINT OF LESS THAN 100°F.
- 2.) MAKE CERTAIN THAT PUMP AND/OR MOTOR ASSEMBLY AND CONTROLS HAVE THE APPROPRIATE RATINGS FOR THE GIVEN APPLICATION AREA CLASSIFICATION. (ie DIVISION I, AGENCY LISTING ETC.)

SECTION 5B
PAGE 2
DATE 4/19

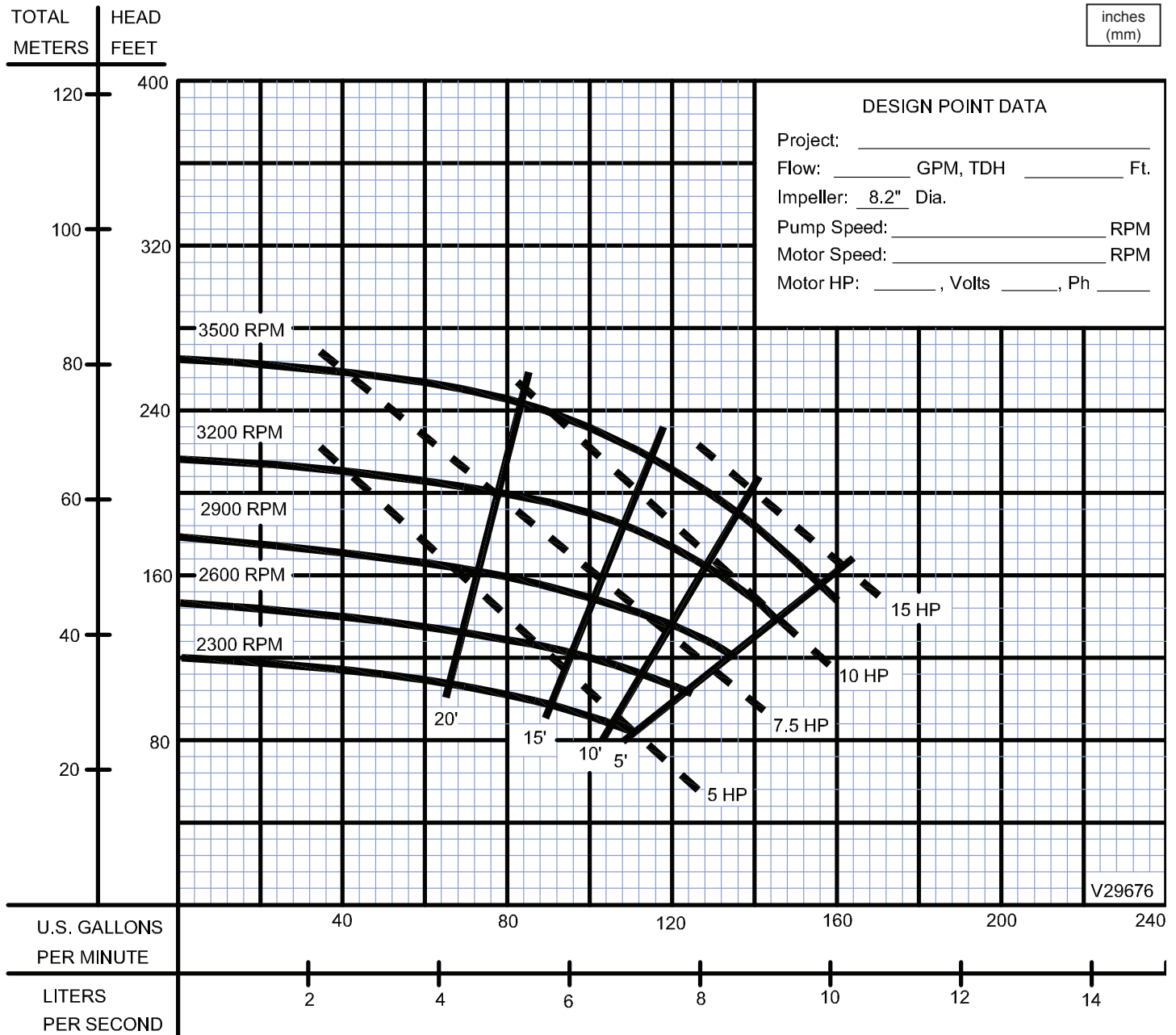
CRANE®

A Crane Co. Company

PUMPS & SYSTEMS

USA: (937) 778-8947 • Canada: (905) 457-6223 • International: (937) 615-3598

End Suction Centrifugal Pumps



Testing is performed with water, specific gravity 1.0 @ 68° F @ (20°C), other fluids may vary performance

Model 2020HCU

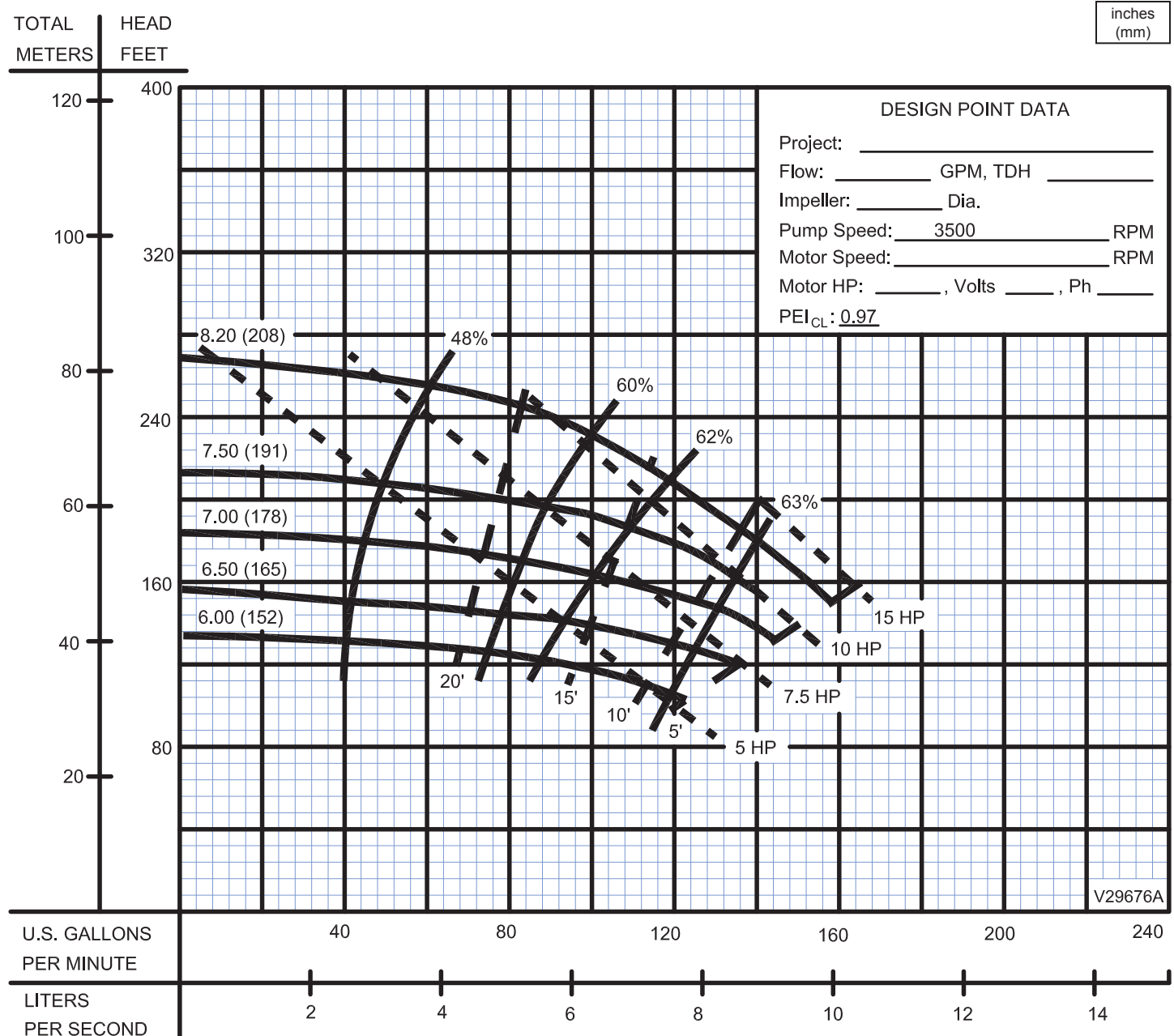
Performance Curve

Universal Drive, Various Impeller Diameters, 3500 RPM

BARNES®

www.cranepumps.com

End Suction Centrifugal Pumps



Testing is performed with water, specific gravity 1.0 @ 68° F @ (20°C), other fluids may vary performance

SECTION 5B
PAGE 4
DATE 4/19

CRANE®

A Crane Co. Company

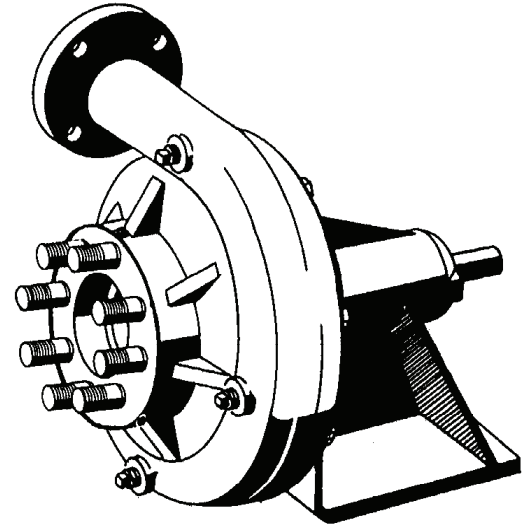
PUMPS & SYSTEMS

USA: (937) 778-8947 • Canada: (905) 457-6223 • International: (937) 615-3598

End Suction Centrifugal Pumps

Specifications:

SUCTION/DISCHARGE	4" (102mm) Suction, 3" (76mm) 125 lb Flange Discharge. Discharge can be placed in 8 different locations depending on piping requirements.
LIQUID TEMPERATURE	180°F (82°C) Continuous
BODY	Cast Iron ASTM, Class 30, with Air Vent, Vacuum Pressure and Drain Plugs
PEDESTAL	Cast Iron ASTM, Class 30
IMPELLER: Design	Enclosed Type, Dynamically Balanced, ISO G6.3
<i>Material</i>	Cast Iron ASTM, Class 30
WEAR RING	Bronze
SHAFT	Steel
SHAFT SLEEVE	Bronze
HARDWARE	Steel
PAINT	Air Dry Enamel
SEAL:	
<i>Design</i>	Single Mechanical
<i>Lubrication</i>	Self Lubrication
<i>Material</i>	Rotating Faces - Carbon Stationary Faces - Ni-Resist Elastomer - Buna-N Hardware -300 Series Stainless
BEARING-PUMP END:	
<i>Design</i>	Single Row, Ball
<i>Lubrication</i>	Grease, Factory
<i>Load</i>	Radial & Thrust
BEARING-DRIVE END:	
<i>Design</i>	Double Row, Ball,
<i>Lubrication</i>	Grease, Factory
<i>Load</i>	Radial & Thrust
OPTIONAL EQUIPMENT	Discharge Check Valve, Hand Primer, Base & OSHA Coupling Guard, Flex Coupling, Strainer, Bronze Impeller, Companion Flange, Flange Gasket



Model: 4030HCU

DESCRIPTION:

THESE PUMPS ARE SUITABLE FOR GENERAL INDUSTRIAL USE SUCH AS LIQUID TRANSFER OR AS BOOSTER PUMPS.



WARNING:

CANCER AND REPRODUCTIVE HARM -
WWW.P65WARNINGS.CA.GOV

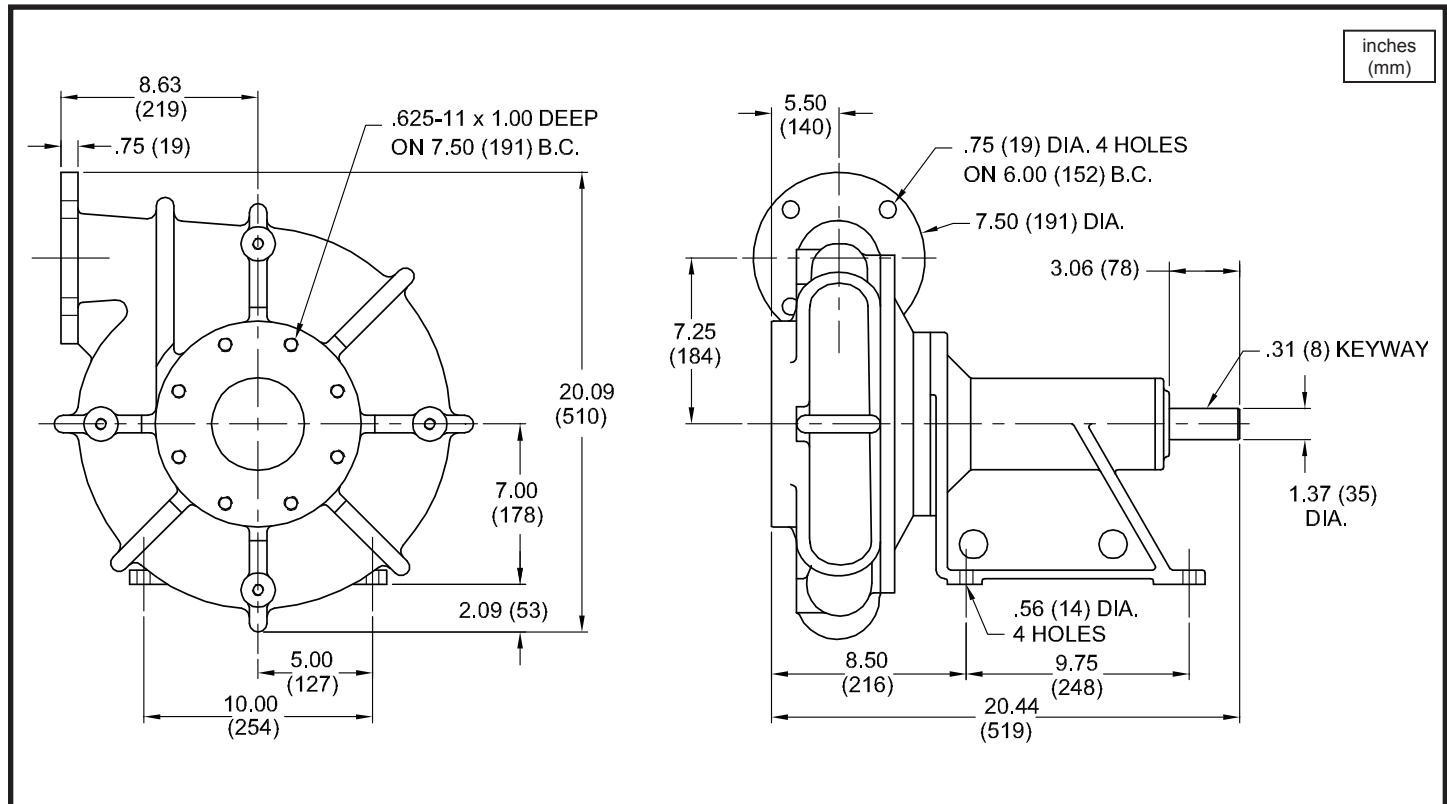
Model 4030HCU

Universal Drive

BARNES®

www.cranepumps.com

End Suction Centrifugal Pumps



inches
(mm)

MODEL NO	PART NO	WEIGHT LBS. (kg)	PEI _{CL}	
4030HCUF0C2	059459	254 (115.2)	0.98	
4030HCUF0C4	059459	254 (115.2)	0.97	

IMPORTANT !

- DO NOT USE FOR PUMPING FLUIDS WITH A FLASH POINT OF LESS THAN 100°F.
- MAKE CERTAIN THAT PUMP AND/OR MOTOR ASSEMBLY AND CONTROLS HAVE THE APPROPRIATE RATINGS FOR THE GIVEN APPLICATION AREA CLASSIFICATION. (ie DIVISION I, AGENCY LISTING ETC.)

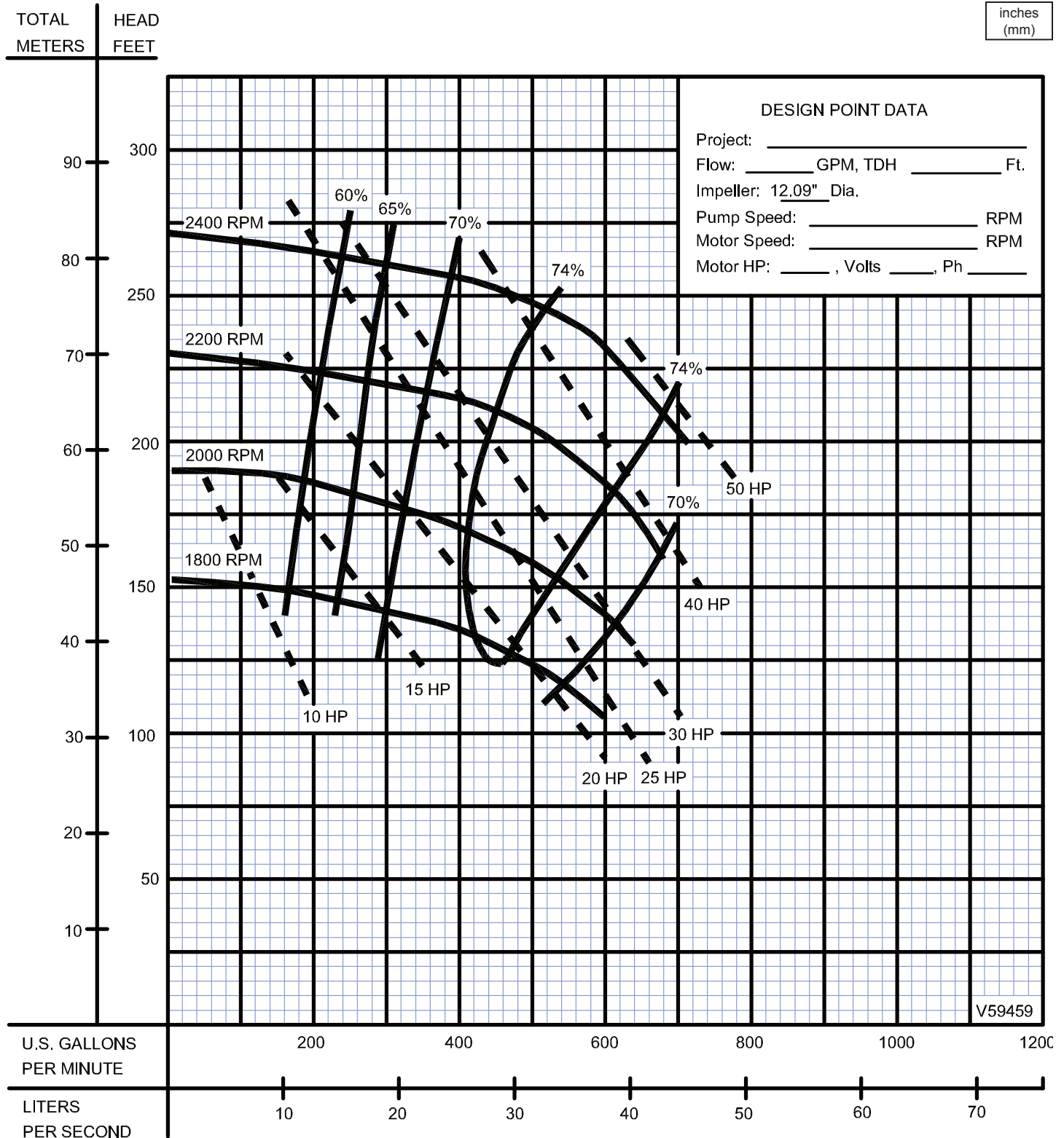
SECTION 5B
PAGE 6
DATE 4/19

CRANE
A Crane Co. Company

PUMPS & SYSTEMS

USA: (937) 778-8947 • Canada: (905) 457-6223 • International: (937) 615-3598

End Suction Centrifugal Pumps



Testing is performed with water, specific gravity 1.0 @ 68° F @ (20°C), other fluids may vary performance



Model 4030HCU

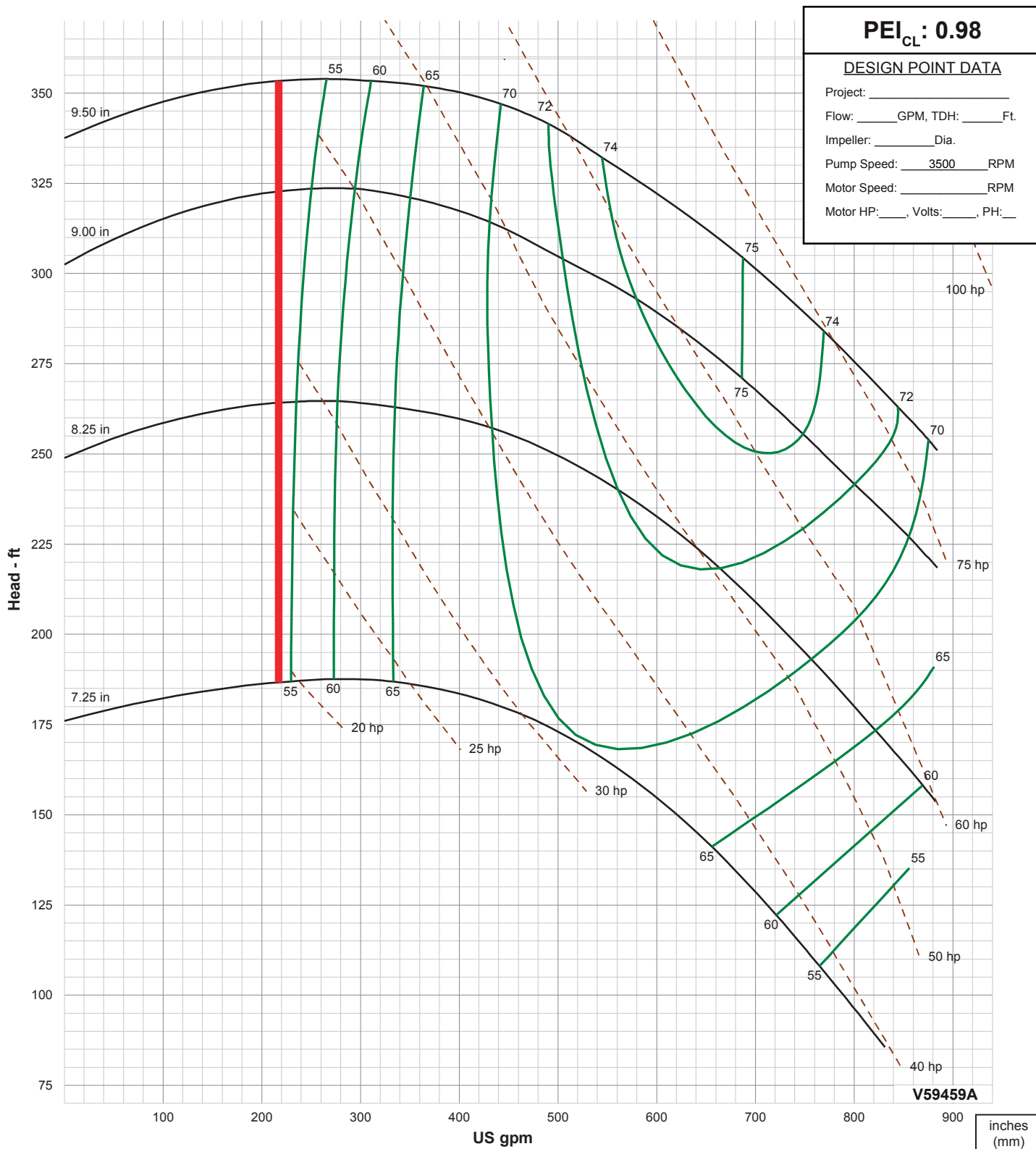
Performance Curve

Universal Drive, Various Impeller Diameters, 3500 RPM

BARNES®

www.cranepumps.com

End Suction Centrifugal Pumps



Testing is performed with water, specific gravity 1.0 @ 68° F @ (20°C), other fluids may vary performance

SECTION 5B
PAGE 8
DATE 7/18

CRANE
A Crane Co. Company

PUMPS & SYSTEMS

A Crane Co. Company

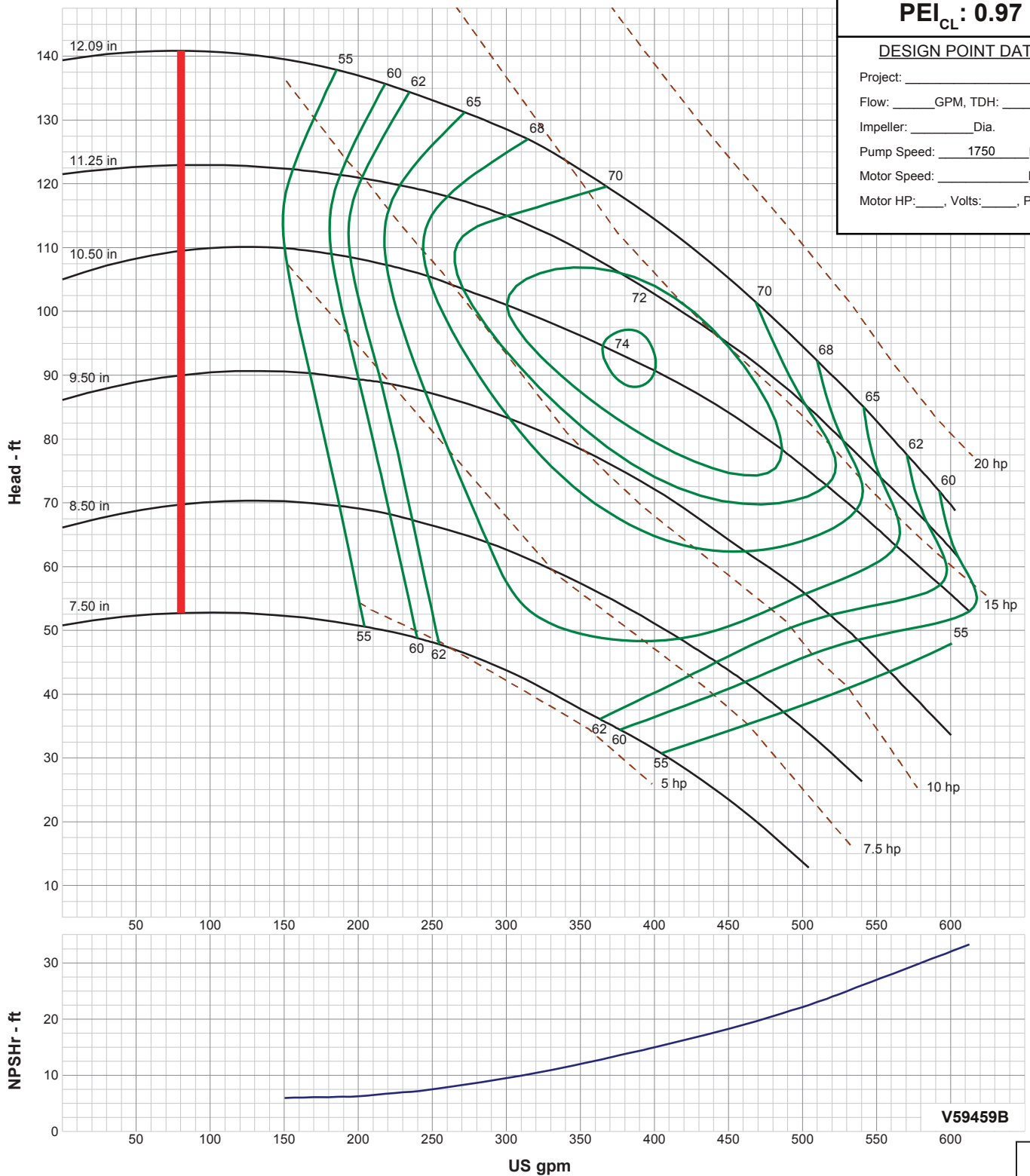
USA: (937) 778-8947 • Canada: (905) 457-6223 • International: (937) 615-3598

End Suction Centrifugal Pumps

PEI_{CL} : 0.97

DESIGN POINT DATA

Project: _____
 Flow: _____ GPM, TDH: _____ Ft.
 Impeller: _____ Dia.
 Pump Speed: _____ 1750 _____ RPM
 Motor Speed: _____ RPM
 Motor HP: _____, Volts: _____, PH: _____



V59459B

inches
(mm)

Testing is performed with water, specific gravity 1.0 @ 68° F @ (20°C), other fluids may vary performance



A Crane Co. Company

PUMPS & SYSTEMS

USA: (937) 778-8947 • Canada: (905) 457-6223 • International: (937) 615-3598

SECTION 5B
PAGE 9
DATE 7/18

End Suction Centrifugal Pumps

DRAWING No.	DESCRIPTION
2020HCU Pumps: CD068054	Flex Coupled on Base, Various Motor Frames
4030 HCU Pumps CD059459	Flex Coupled on Base, Various Motor Frames



WARNING:
CANCER AND REPRODUCTIVE HARM -
WWW.P65WARNINGS.CA.GOV

SECTION 5B
PAGE 10
DATE 12/18

CRANE®

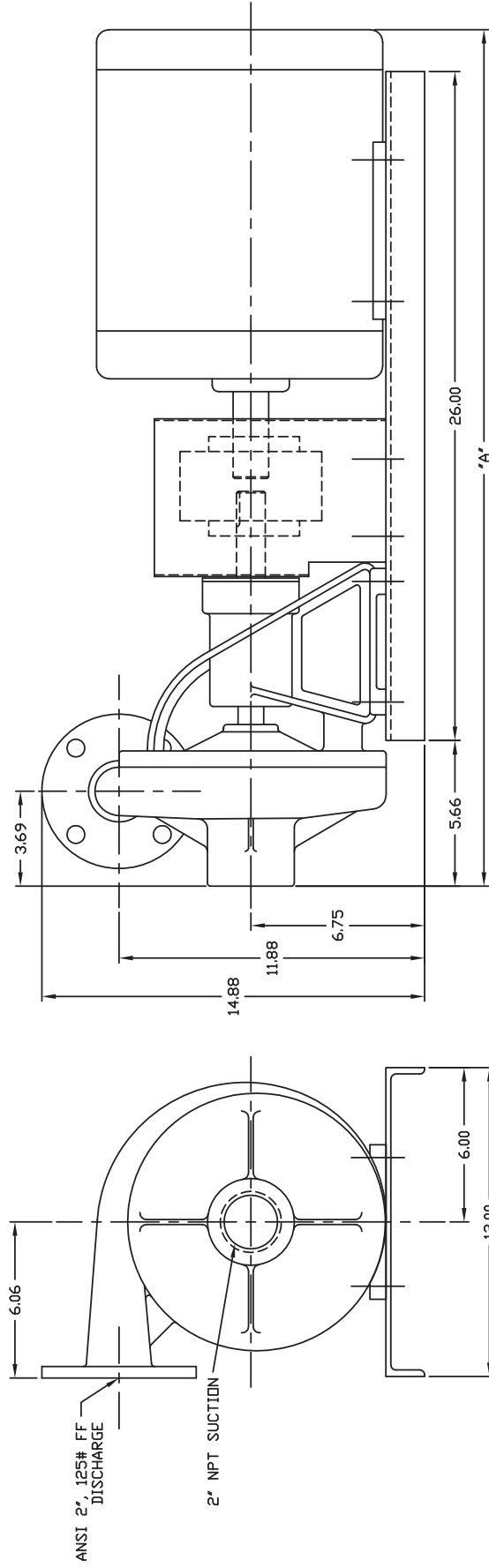
A Crane Co. Company

PUMPS & SYSTEMS

USA: (937) 778-8947 • Canada: (905) 457-6223 • International: (937) 615-3598

4 3 2 1

D C B A



NOTE: ALL DIMENSIONS ARE ±.13.

FRAME	DP	TEFC
182T	31.29	32.29
184T	32.29	33.29
213T	34.66	37.22
215T	34.66	37.22

THIS PRINT IS AND CONTAINS PROPRIETARY INFORMATION OWNED EXCLUSIVELY BY CRANE PUMPS & SYSTEMS, INC. THIS RESTRICTION INCLUDES, BUT IS NOT LIMITED TO THE CONDITION THAT THIS PRINT WILL ONLY BE USED AS A RECORD OR TO IDENTIFY OR INSPECT PARTS OR FOR OTHER INFORMATION PURPOSES AND WILL NOT BE USED TO MANUFACTURE OR PROCURE THE MANUFACTURE OF THE PARTS SHOWN IN THIS PRINT BY ANY OTHER SOURCE THAN CRANE PUMPS & SYSTEMS, INC.

THIS DRAWING IS APPROVED FOR UNCONTROLLED DISTRIBUTION AS A RESULT OF CRANE PUMPS & SYSTEMS CONSTANT PRODUCT IMPROVEMENT PROGRAM. PRODUCT CHANGES MAY OCCUR. AS SUCH, CRANE PUMPS & SYSTEMS RESERVES THE RIGHT TO CHANGE PRODUCT WITHOUT PRIOR WRITTEN NOTIFICATION

WWW.CRANEPUMPS.COM

SHEET 1 OF 1

TITLE: 2020HCU FLEX COUPLING

DWG NO: CD068054

REV: A

CAGE NO: 96046

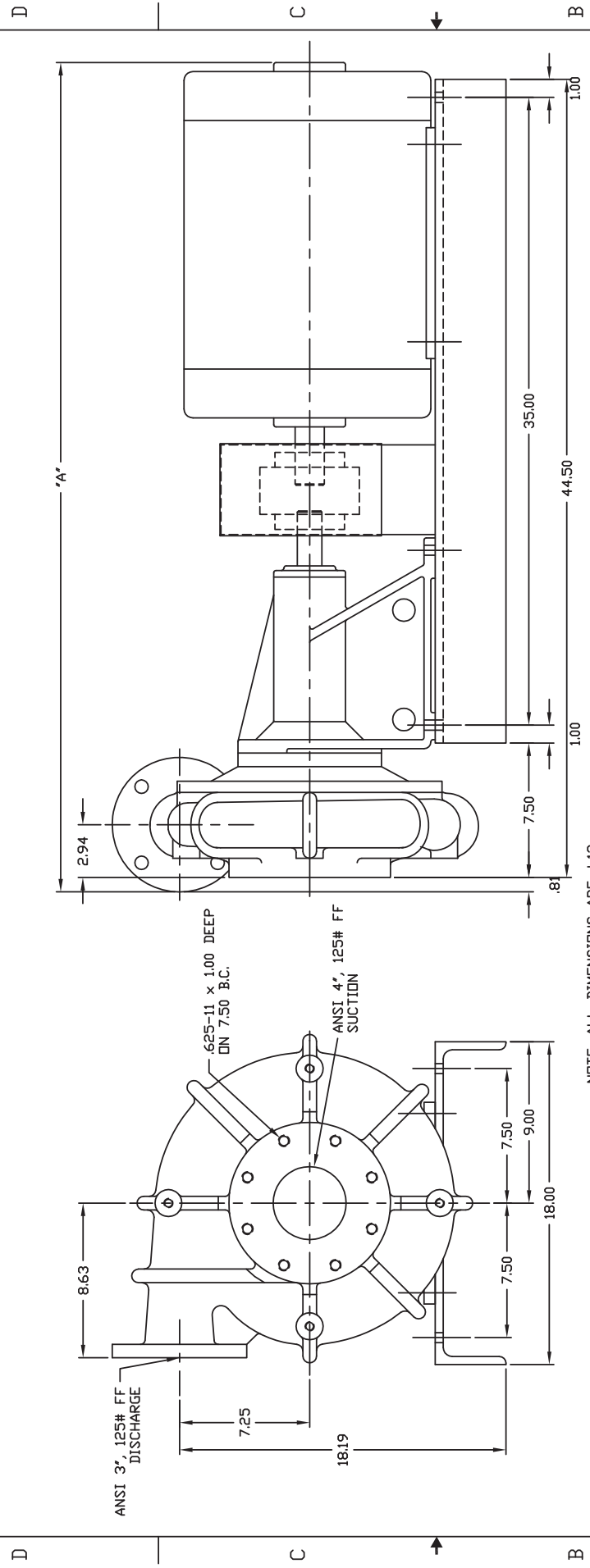
CRANE PUMPS & SYSTEMS

BURKS PUMPS - BARNES - SELLERS

PROSSENFELDO - WEINMAN - DEWING

4 3 2 1

1 2 3 4



NOTE: ALL DIMENSIONS ARE ±.13.

MOTOR FRAME	DIM DP	DIM 'A'	TEFC
182T	35.56	36.56	
184T	36.56	37.56	
213T	39.13	41.69	
215T	39.13	41.69	
254T	43.70	46.70	
256T	43.70	46.70	
284T	46.74	50.12	
284TS	46.49	50.12	
296T	46.74	50.12	
296TS	46.49	50.12	
324TS	47.61	51.80	
326TS	47.61	51.80	

<p>THIS PRINT IS AND CONTAINS PROPRIETARY INFORMATION OWNED EXCLUSIVELY BY CRANE PUMPS & SYSTEMS, INC. THIS RESTRICTION INCLUDES, BUT IS NOT LIMITED TO THE CONDITION THAT THIS PRINT WILL ONLY BE USED AS A RECORD OR TO IDENTIFY OR INSPECT PARTS OR FOR OTHER INFORMATION PURPOSES AND WILL NOT BE USED TO MANUFACTURE OR PROCURE THE MANUFACTURE OF THE PARTS SHOWN IN THIS PRINT BY ANY OTHER SOURCE THAN CRANE PUMPS & SYSTEMS, INC.</p>	<p>THIS DRAWING IS APPROVED FOR UNCONTROLLED DISTRIBUTION</p> <p>AS A RESULT OF CRANE PUMPS & SYSTEMS CONSTANT PRODUCT IMPROVEMENT PROGRAM, PRODUCT CHANGES MAY OCCUR. AS SUCH, CRANE PUMPS & SYSTEMS RESERVES THE RIGHT TO CHANGE PRODUCT WITHOUT PRIOR WRITTEN NOTIFICATION</p> <p>WWW.CRANEPUMPS.COM</p>	<p>TITLE</p> <h2 style="text-align: center;">4030HCU FLEX COUPLING</h2> <p>CAGE NO 96046</p>
<p>THIS PRINT IS AND CONTAINS PROPRIETARY INFORMATION OWNED EXCLUSIVELY BY CRANE PUMPS & SYSTEMS, INC. THIS RESTRICTION INCLUDES, BUT IS NOT LIMITED TO THE CONDITION THAT THIS PRINT WILL ONLY BE USED AS A RECORD OR TO IDENTIFY OR INSPECT PARTS OR FOR OTHER INFORMATION PURPOSES AND WILL NOT BE USED TO MANUFACTURE OR PROCURE THE MANUFACTURE OF THE PARTS SHOWN IN THIS PRINT BY ANY OTHER SOURCE THAN CRANE PUMPS & SYSTEMS, INC.</p>		<p>REV</p> <p style="text-align: center;">A</p> <p>DWG NO CD059459</p>
<p>CRANE PUMPS & SYSTEMS</p> <p style="text-align: center;">CRANE</p> <p>BURKIS PUMPS - BARNES - SELLERS PROGRESSEINFO - WEINMAN - DEILING</p>		<p>SHEET 1 OF 1</p>

1 2 3 4